



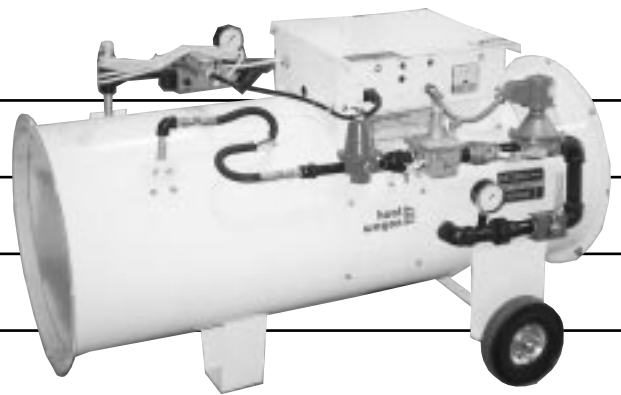
342 N. Co. Rd. 400 East  
Valparaiso, IN 46383  
219-464-8818 • Fax 219-462-7985  
[www.heatwagon.com](http://www.heatwagon.com)

## Installation and Maintenance Manual

Please retain this manual for future reference.

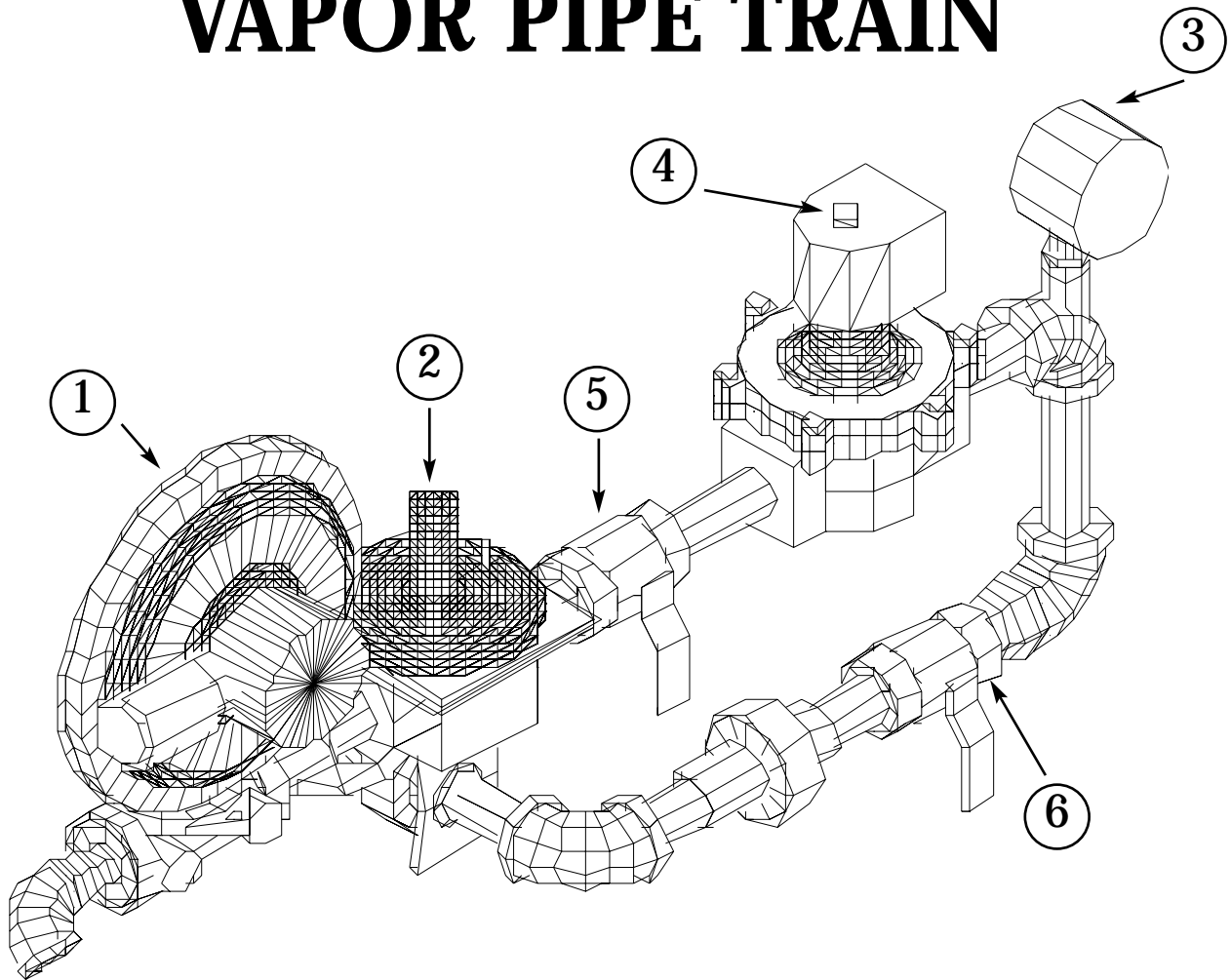
# 1800(L)

*Construction  
Heater*



*For your safety: Do not use this heater in a space where gasoline or other liquids having flammable vapors are stored.*

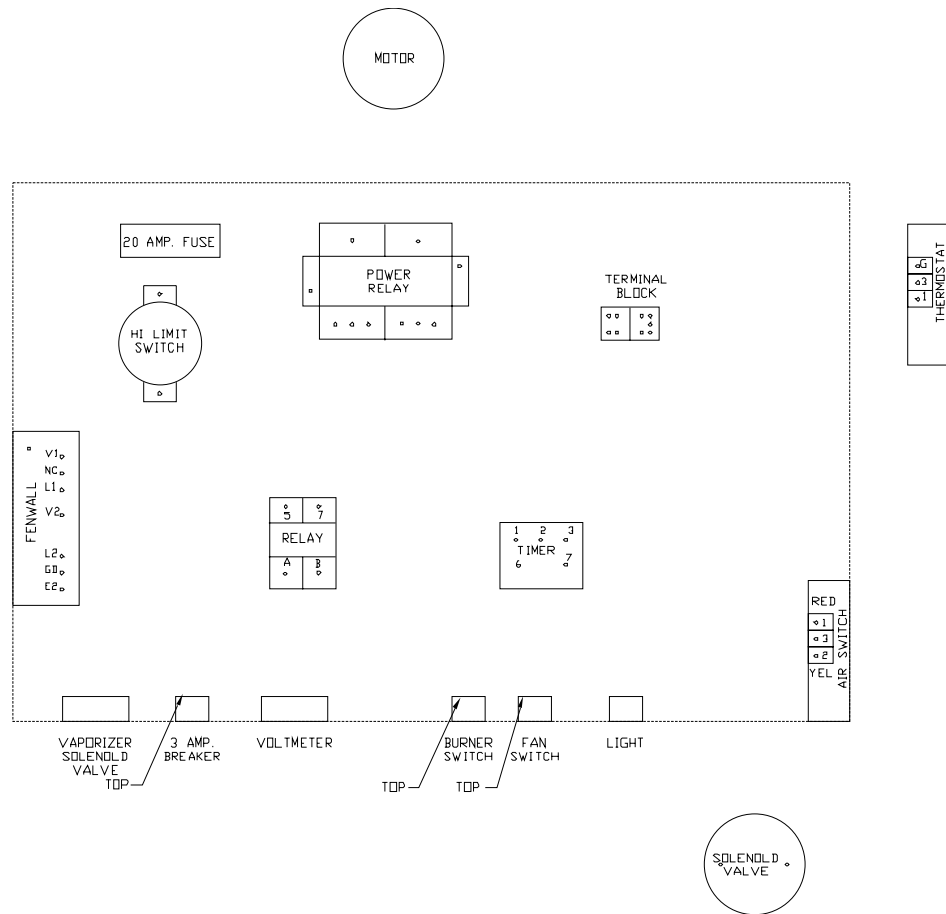
# 1800 VAPOR PIPE TRAIN



Item#	Part #	Description
*1	HWP 40SV06	1ST STAGE REGULATOR 3/4" x 1"
2	HWP HV1162	1" LOW PRESSURE REGULATOR
3	HWP HV1169	15" W.C. LOW PRESSURE GAUGE
4	HWP HV1032	115V. GAS SOLENOID VALVE 1" DIAMETER
5	HWP HV1035	1" BALL VALVE
6	HWP HV1160	1" LOCKING GAS SELECTOR VALVE
	HWP HV1032C	COIL COVER FOR HV1032

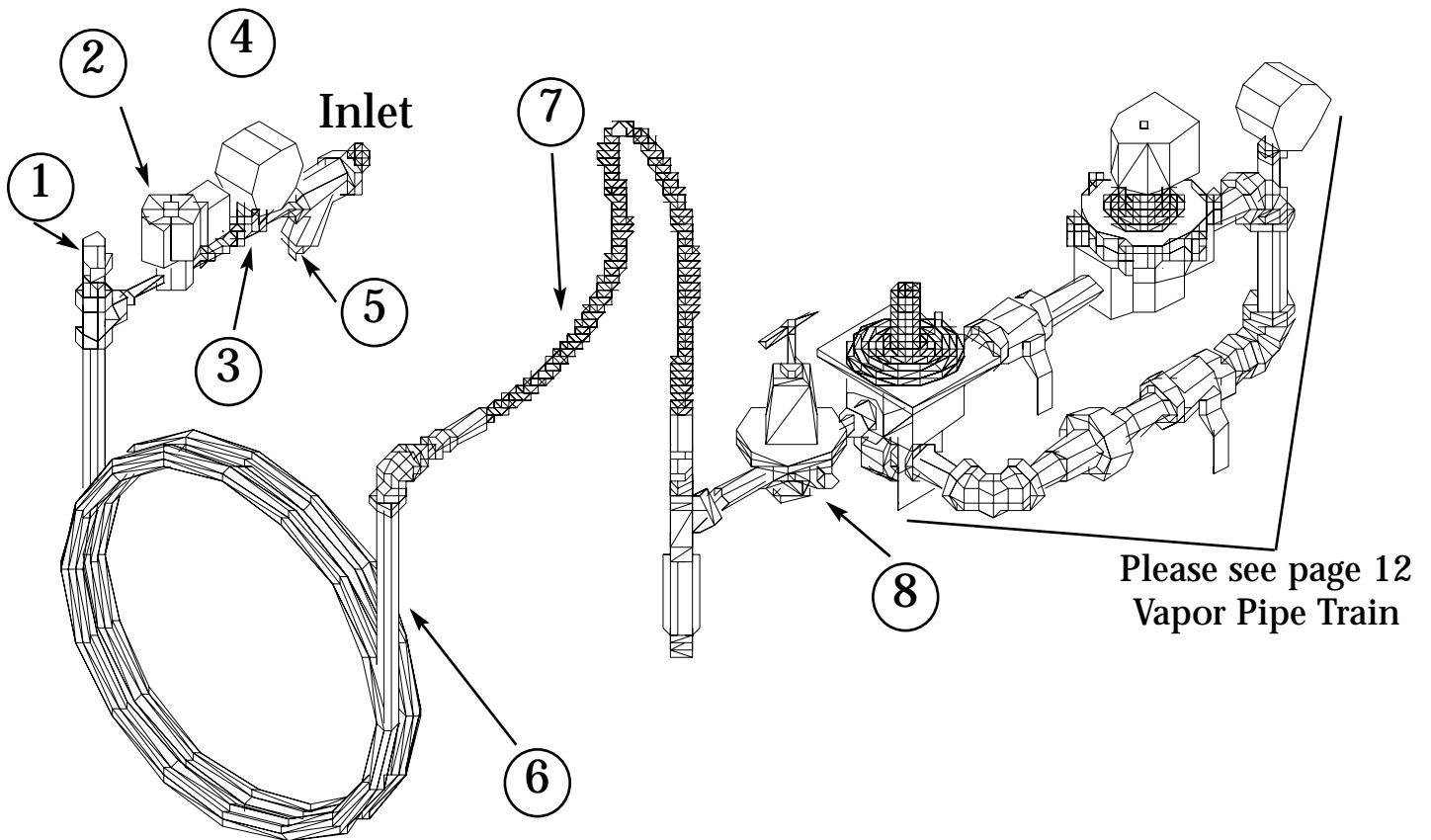
\*If you have an 1800L (Liquid Propane Heater) use part #HR1053 1st stage regulator

# CONTROLS BREAKDOWN



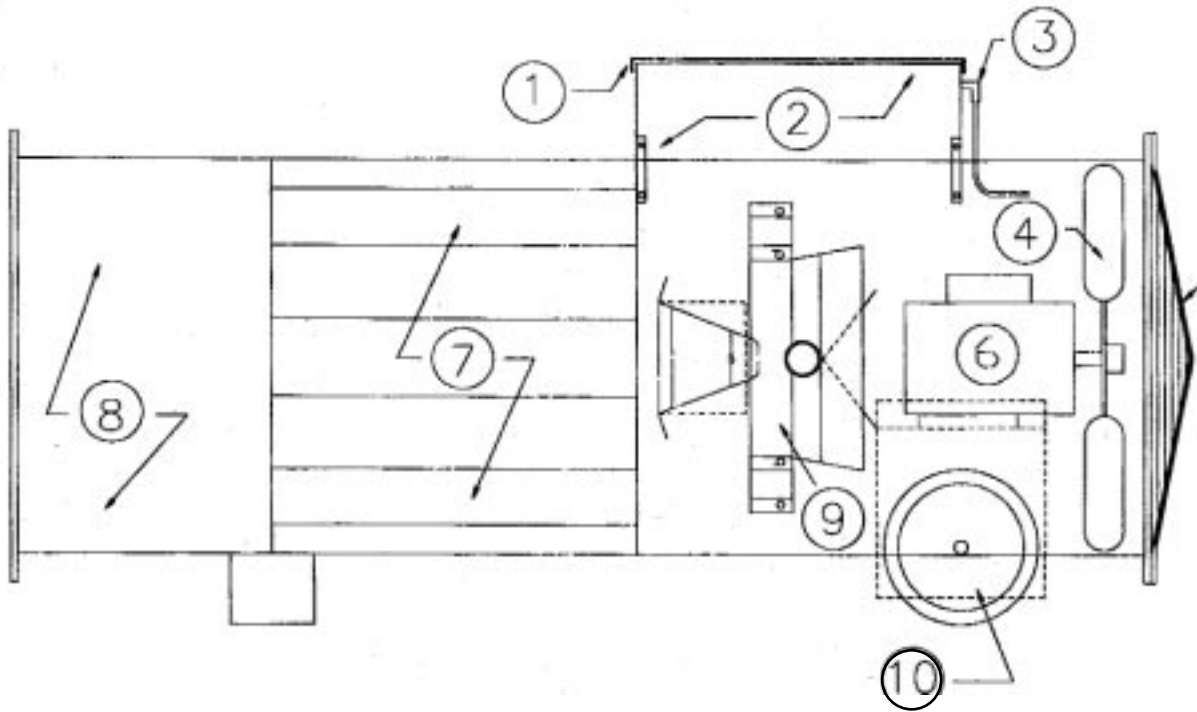
Item#	Part #	Description
1	SFP 5989	SUPPLY VOLTAGE METER (0-150)
2	SFP 2505	INDICATOR LIGHT
3	HWP HC1011	FAN ON/OFF SWITCH
4	HWP HC1011	BURNER ON/OFF SWITCH
5	SFP 2453	REMOTE THERMOSTAT
6	HWP HC1016	VAPORIZER RECEPTACLE
7	HWP HC1019B	3 AMP. CIRCUIT BREAKER
8	HWP HC1004B	ELECTRODE ASSEMBLY
9	HWP HC1010	AIRFLOW SWITCH
10	SFP 4512	CONTROL RELAY
11	HWP HC1003A	FAN DELAY TIMER
12	SFP 2446	HIGH-LIMIT CONTROL
13	HWP HC1001C	IGNITOR CONTROL BOARD W/TIME DELAY
14	SFP 2436	MOTOR RELAY
15	HWP HC1115	20 AMP. FUSE (SC-20)
16	HWP HC1122	FUSE BLOCK
17	HWP HC1020	POWER CORD

# 1800 LIQUID PIPE TRAIN



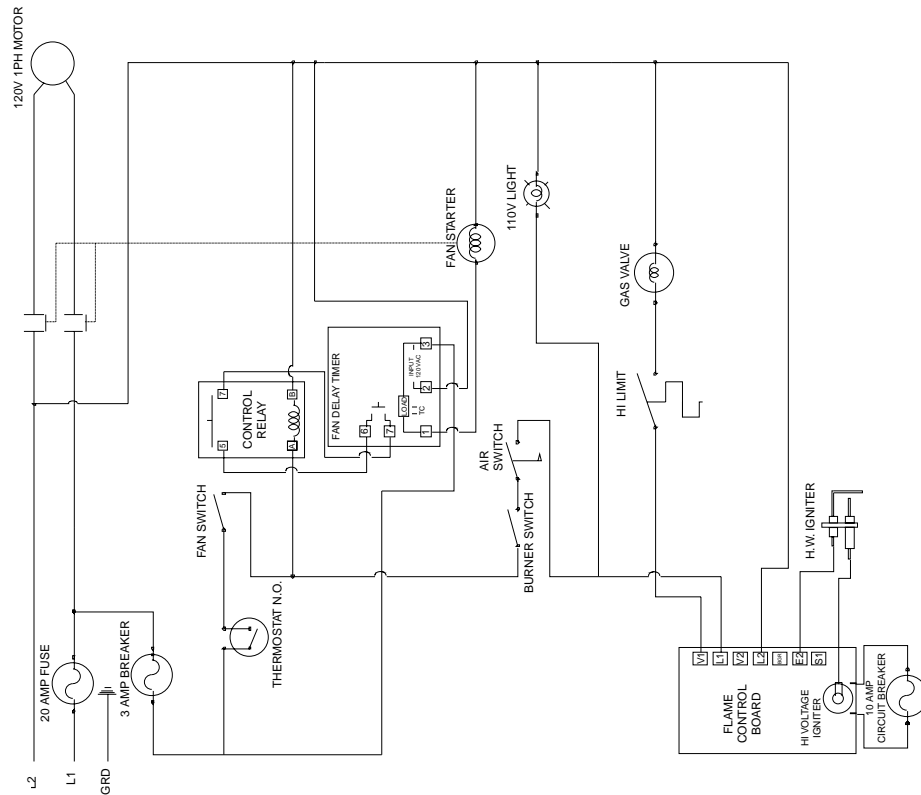
Item#	Part #	Description
1	HWP HV1039	SAFETY RELIEF VALVE
2	HWP HV1137	LIQUID PROPANE SOLENOID VALVE
3	HWP HV1123	MANUAL SHUT-OFF VALVE
4	HWP HV1054	LIQUID PRESSURE GAUGE
5	HWP HV1129	LIQUID STRAINER
6	HWP HV1140	COIL
7	HWP HV1042B	HOSE
8	HWP HR1053	HIGH PRESSURE REGULATOR

# Model 1800(SL) Series

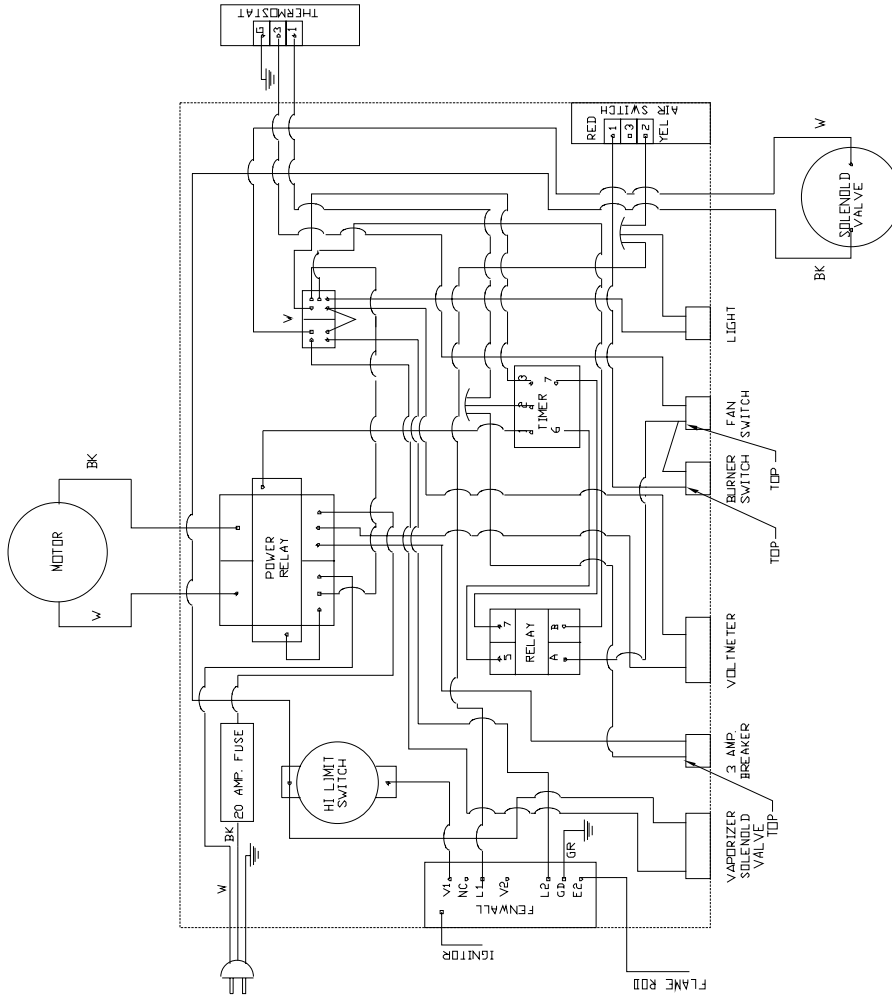


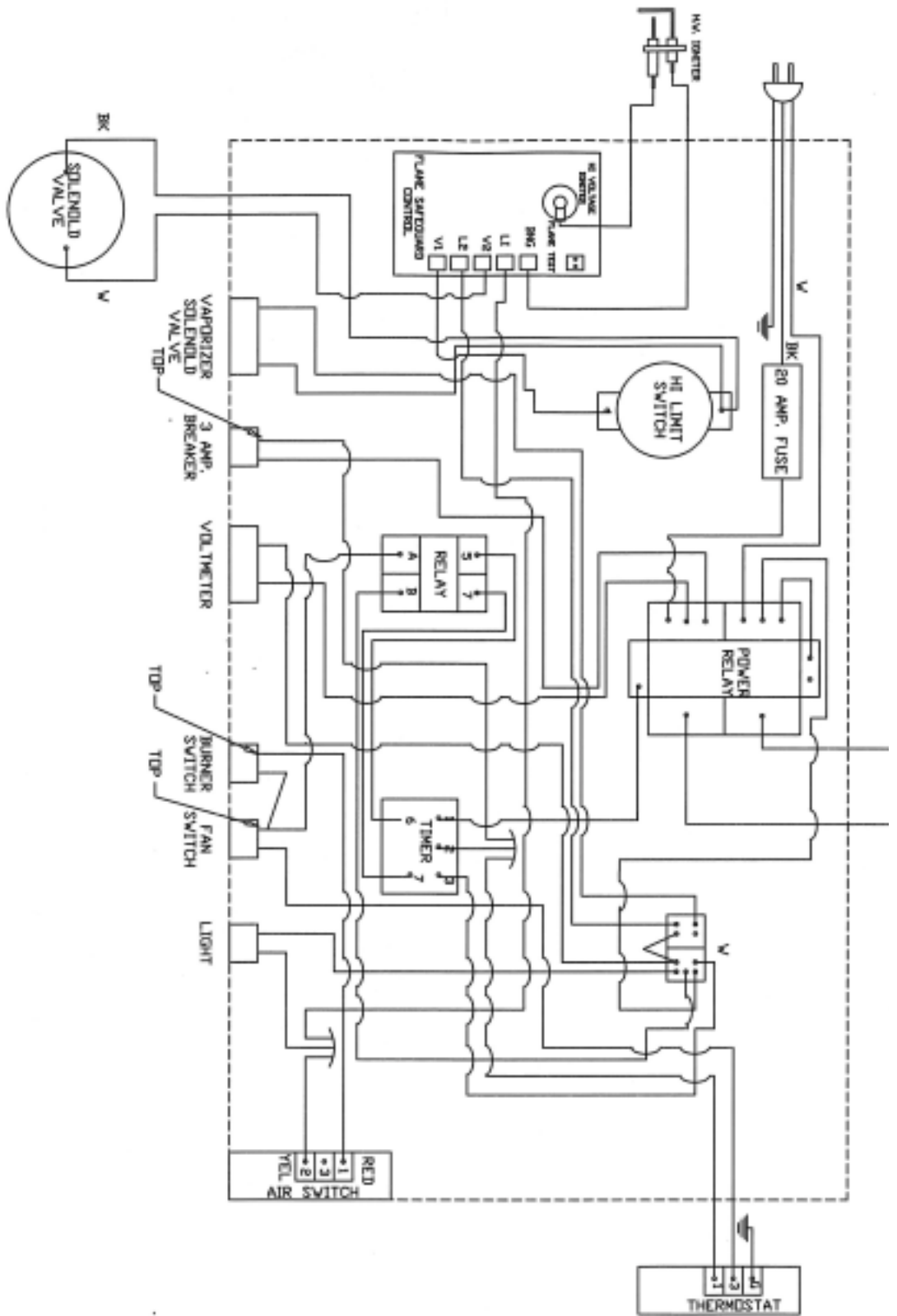
Item#	Part #	Description
1	HWP HC1069B	LID/CONTROL BOX
2	HWP HC1069A	CONTROL BOX W/LID
3	N/S	COPPER TUBE/AIR SWITCH
4	HWP HP1161	FAN BLADE
5	HWP HG1167	FAN GUARD
6	HWP HM1166	MOTOR 1 HP
7	HWP HB1177	HEAT SHIELD
8	HWP HB1800	BODY
9	HWP HB1171	BURNER
10	HWP HW1164	WHEEL 8"x 1.75" x 1/2" HUB
	HWP HW1164B	AXLE FOR 1800





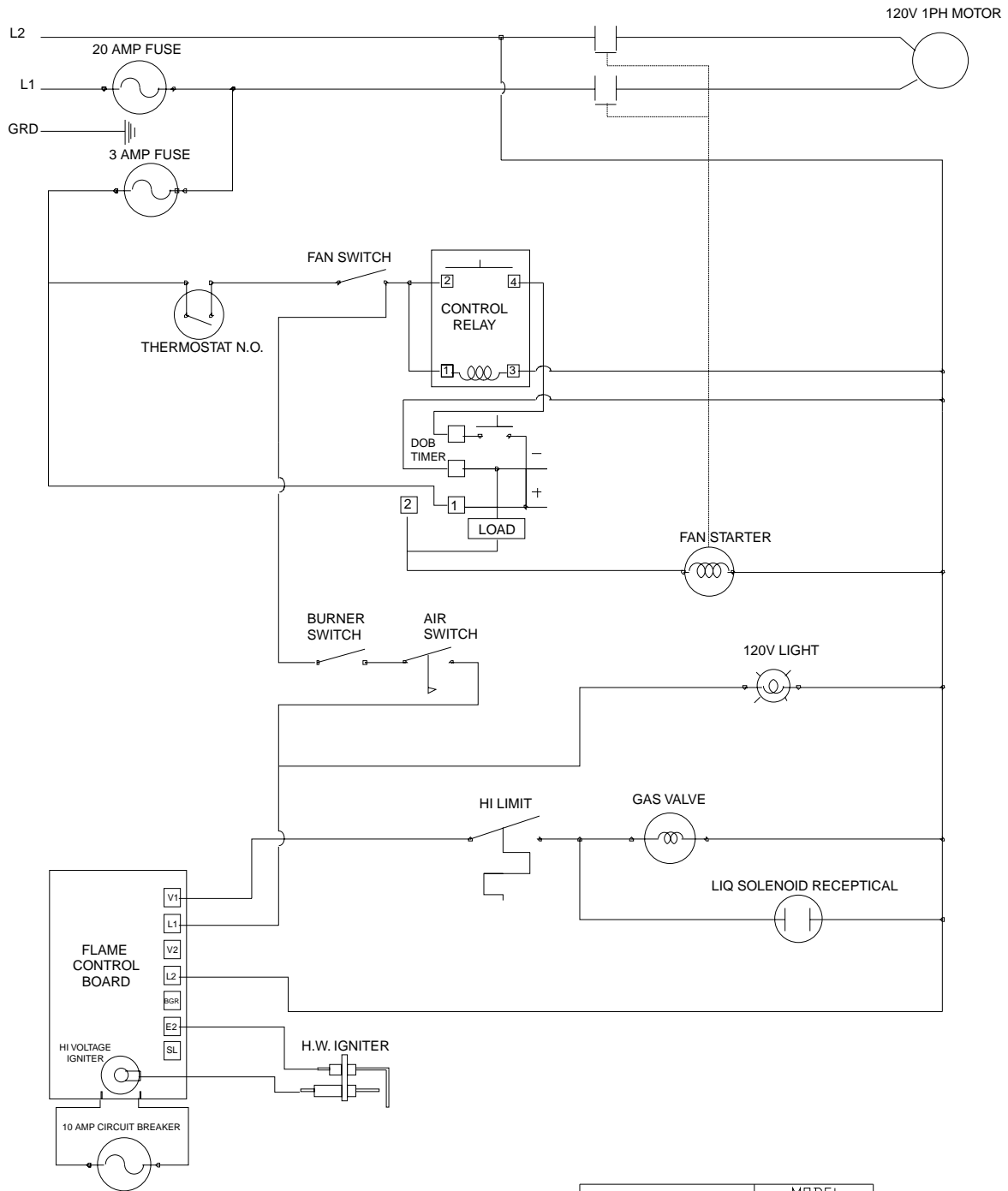
SURE FLAME MODEL 1800  
 FROM 1989 TO 1998  
 180089CU1989 CUR.





NOTE:  
 ALL 16 GA. STR. IEW 600V RED,  
 UNLESS OTHERWISE SPECIFIED

HEAT WAGON	MODEL 1800
DATE OF 2007 DRAWING	FROM TO
1800wd2-2007	05 CURR.



SURE FLAME	MODEL 1800
DATE OF DRAWING 1998	FROM TO
1800P89	PRIOR 1989