



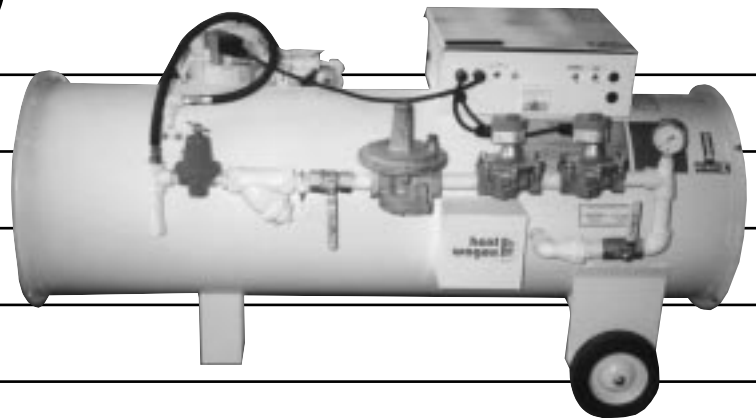
342 N. Co. Rd. 400 East
Valparaiso, IN 46383
219-464-8818 • Fax 219-462-7985
www.heatwagon.com

Installation and Maintenance Manual

Please retain this manual for future reference.

2000(L)

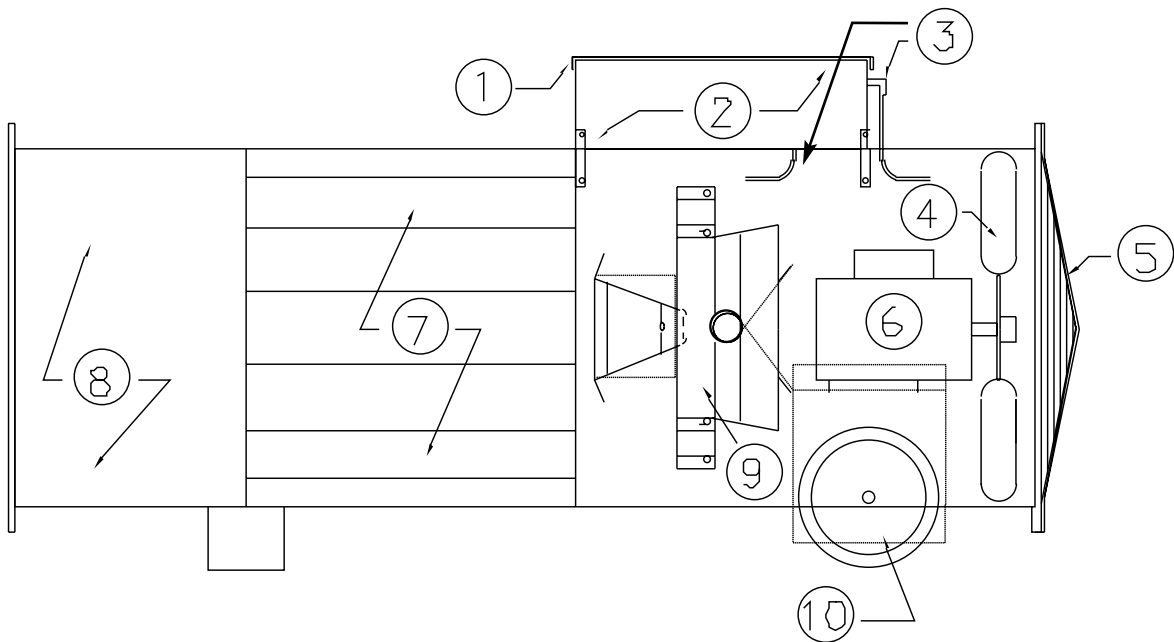
*Construction
Heater*



For your safety: Do not use this heater in a space where gasoline or other liquids having flammable vapors are stored.

MODEL 2000 SERIES

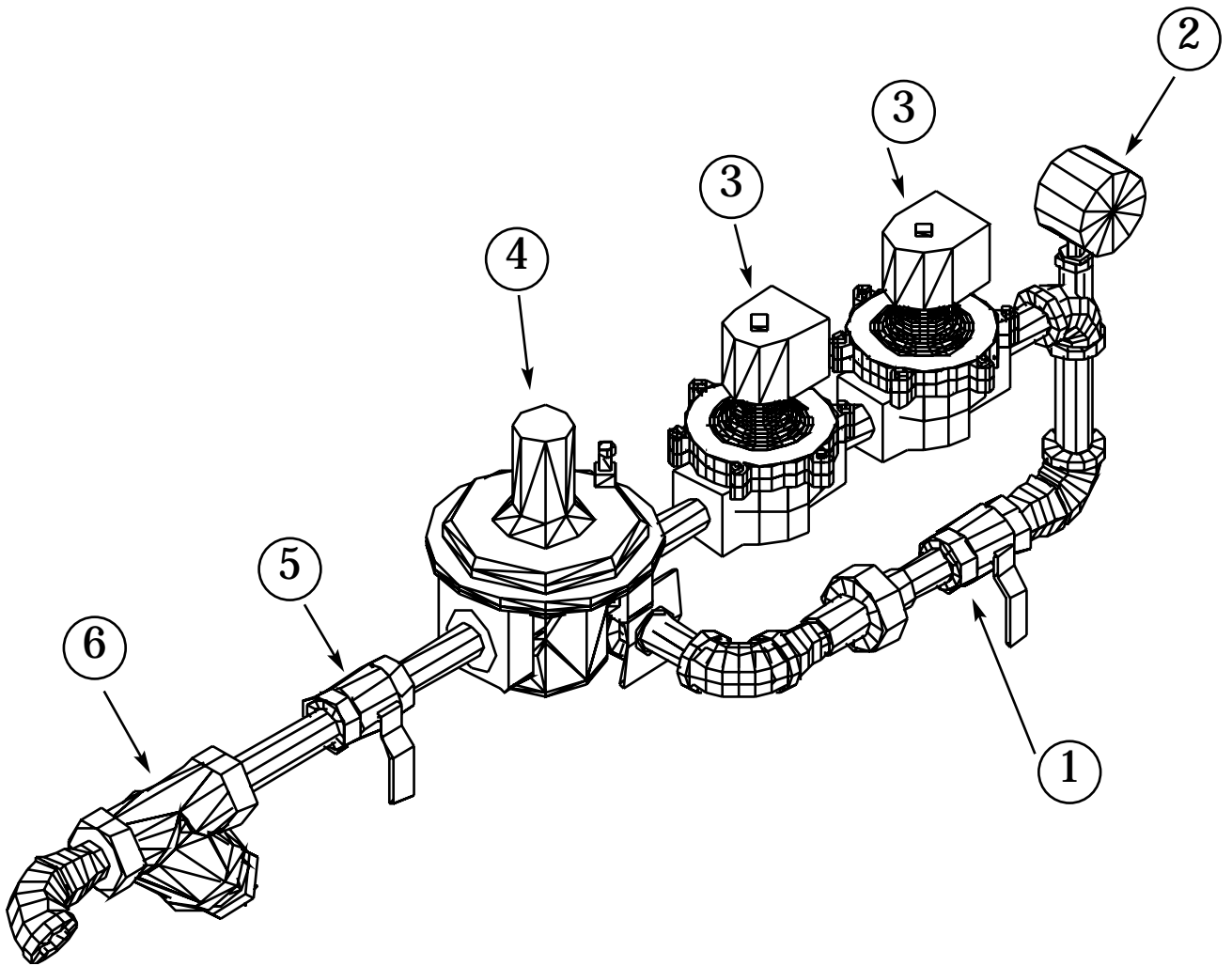
<u>Item</u>	<u>Part #</u>	<u>Description</u>
1	HWP HC1069B	Lid/Control Box
2	HWP HC1069A	Control Box w/Lid
3	N/S	Copper Tube / Air Switch
4	HWP HP1161	Fan Blade
5	HWP HG1167	Fan Guard
6	HWP HM1166	Motor 1 HP
7	HWP HB1177B	Heat Shield
8	HWP HB2000	Body
9	HWP HB1171B	Burner
10	HWP HW1164	Wheel 8" x 1.75" x 1/2" Hub
	HWP 2000A	Sub assembly w/body, wheels, axle
	HWP HB1171BA	Sub assembly w/burner & igniter
	HWP HW1164B	Axle



2000IPTA2

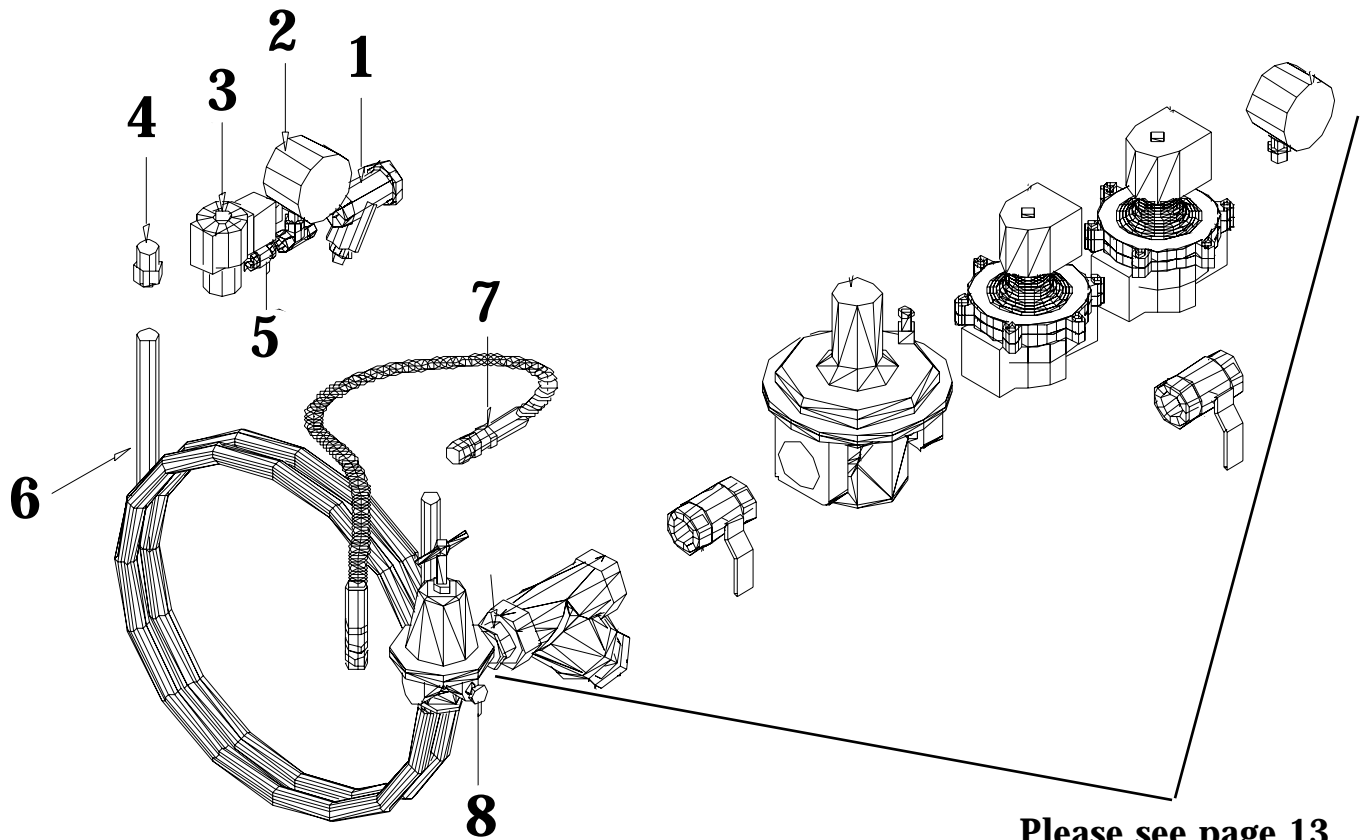
MODEL 2000 VAPOR PIPE TRAIN BREAKDOWN

<u>Item</u>	<u>Part #</u>	<u>Description</u>
1	HWP HV1160	1" Locking Gas Selector Valve
2	HWP HV1169	W.C. Low-Pressure Gauge (0-30" W.C.)
3	HWP HV1032	Solenoid Valve - 1"
4	HWP HV20SV02B	Regulator - Low Pressure Regulator (10psi max)
5	HWP HV1035	1" Manual Shut Valve
6	HWP HV1129B	"Y" Strainer 1"
	HWP HV1032C	Coil Cover
	HWP HV1032RK	Rebuild Kit for HV1032



2000(L) LIQUID PIPE TRAIN

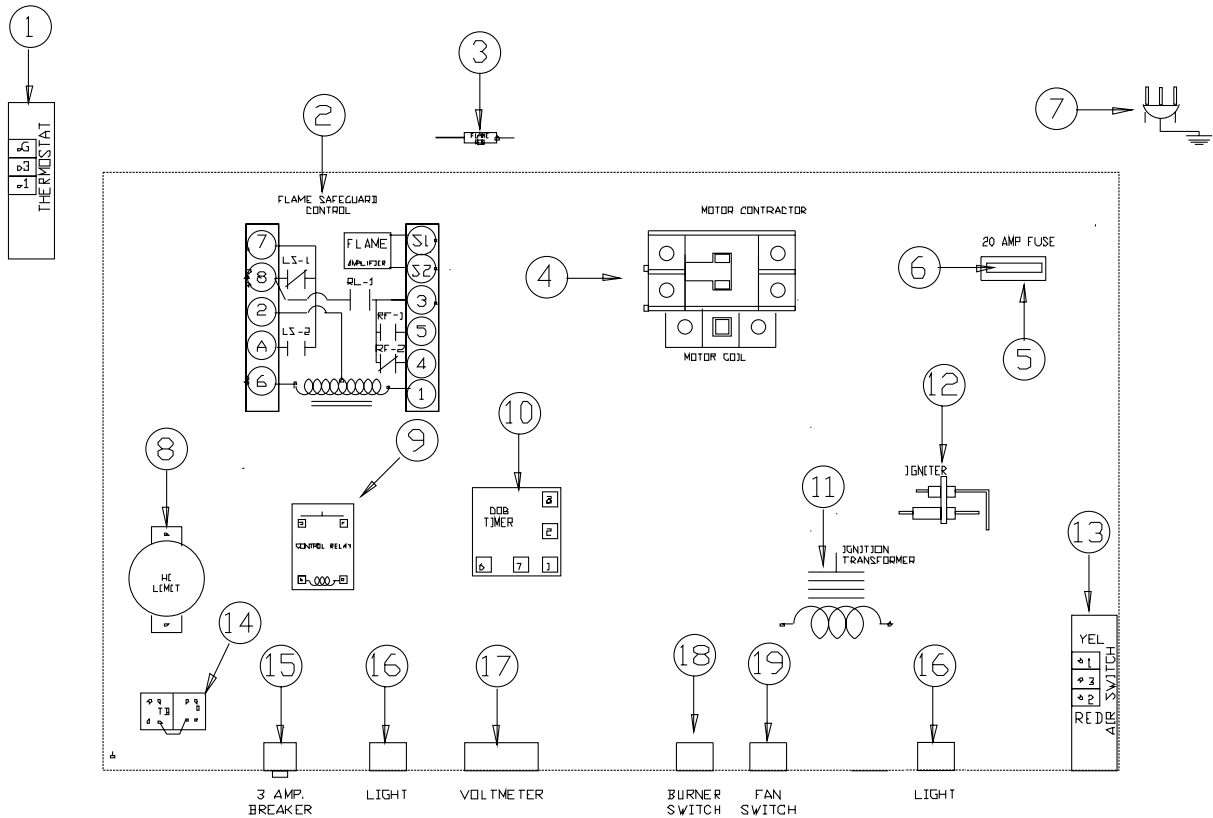
<u>Item</u>	<u>Part #</u>	<u>Description</u>
1	HWP HV1129	Liquid Strainer
2	HWP HV1054	Liquid High Pressure Gauge (200 psi liquid propane gauge)
3	HWP HV1137	Liquid Propane Solenoid Valve
4	HWP HV1039	Safety Relief Valve
5	HWP HV1123	Manual Shut-Off Valve
6	HWP HV1140	Vaporizing Ring
7	HWP HV1042B	Hose
8	HWP HR1053	High Pressure Regulator (LP) (1/2"NPT, 400 psi max inlet) (outlet 3-30 psi)



Please see page 13
Vapor Pipe Train

MODEL 2000 CONTROLS BREAKDOWN

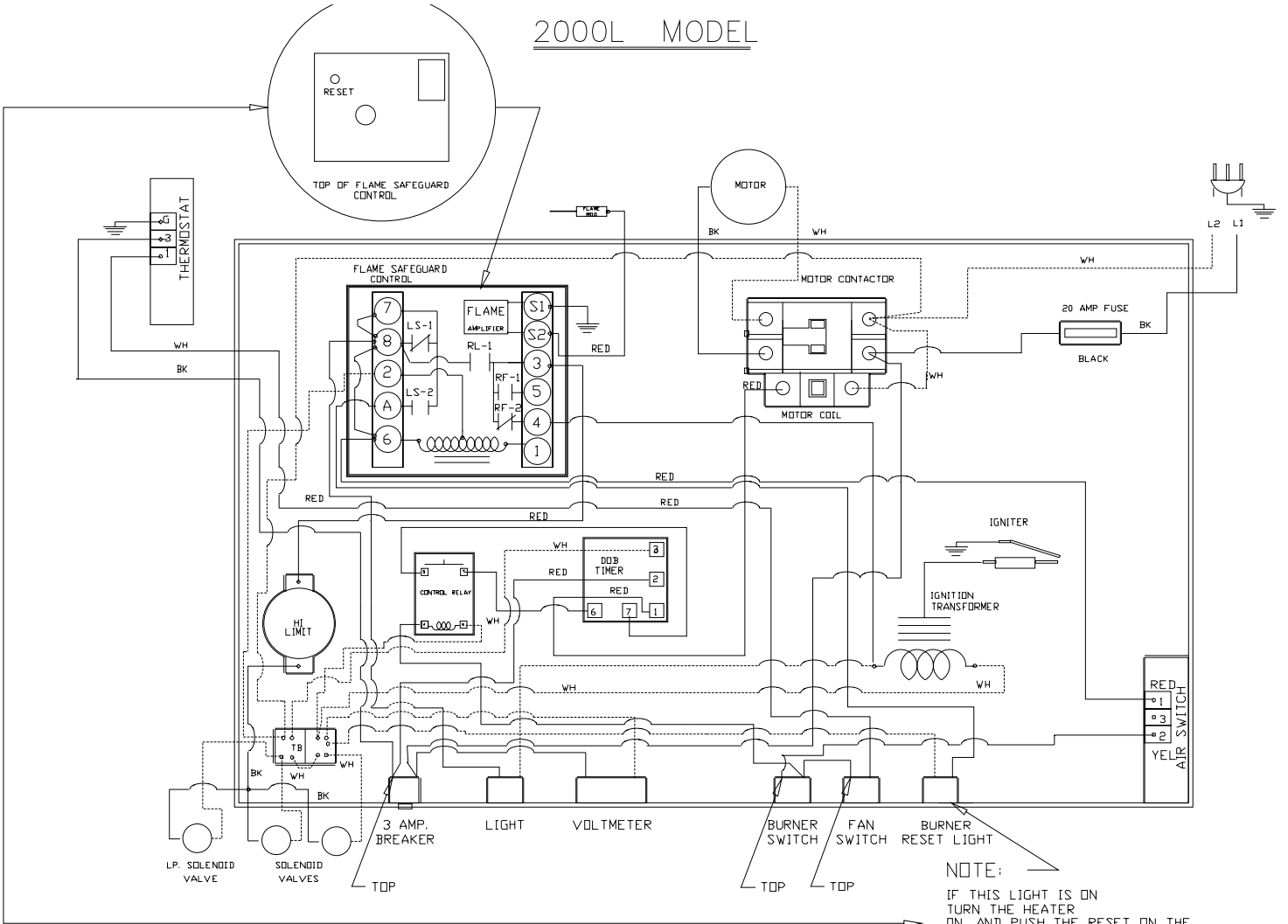
<u>Item</u>	<u>Part #</u>	<u>Description</u>
1	SFP2453	Thermostat
2	SFP2438	Flame Safeguard Control
3	HWP HC1004C	Flame Rod
4	SFP2436	Motor Relay
5	HWP HC1122	Fuse Block
6	HWP HC1115	Fuse 20Amp
7	HWP HC1020	Power Cord
8	SFP2446	Hi Limit Switch
9	SFP4512	Control Relay
10	HWP HC1003A	D.O.B. Timer
11	SFP2501	Ignition Transformer
12	HWP 1190310	Igniter (replaces HC10040)
13	HWP HC1010	Airflow Switch
14	099125-03	Terminal Block
15	HWP HC1019B	Circuit Breaker 3 Amp
16	SFP2505	Light
17	SFP5989	Voltmeter
18	HWP HC1011	Burner Switch
19	HWP HC1011	Fan Switch
	HWP 2453A	Thermostat Sub Assembly w/15' Cord



HEAT WAGON	MODEL 2000
DATE OF DRAWING 1999	FROM TO
1812MPT	1-99 CURR

MODEL 2000

2000L MODEL



NOTE:
IF THIS LIGHT IS ON
TURN THE HEATER
ON, AND PUSH THE RESET ON THE
ORANGE FIREYE FLAME
SAFEGUARD CONTROL

—— HDT
----- NEUTRAL

HEAT WAGON	MODEL 2000L
DATE OF DRAWING 2001	FROM TO
NAME OF DRAWING 2000L WD-2001	1-01 CURR