



342 N. Co. Rd. 400 East  
Valparaiso, IN 46383  
219-464-8818 • Fax 219-462-7985  
[www.heatwagon.com](http://www.heatwagon.com)

## Installation and Maintenance Manual

Please retain this manual for future reference.

# 4200

***Construction  
Heater***

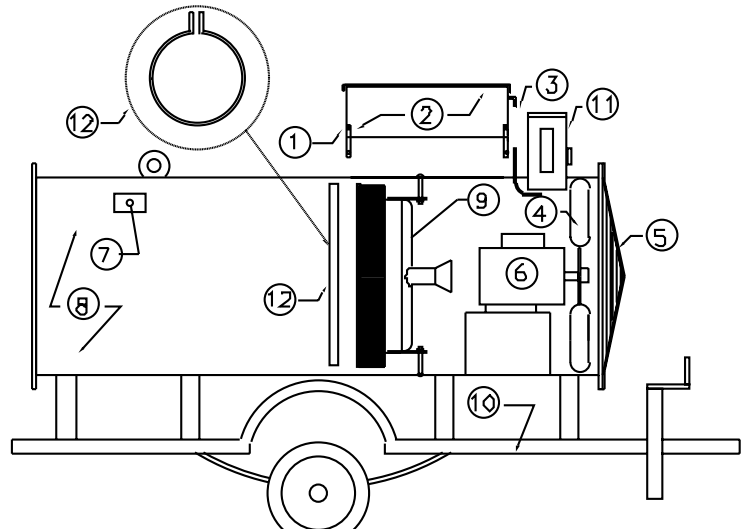


*For your safety: Do not use this heater in a space where gasoline or other liquids having flammable vapors are stored.*

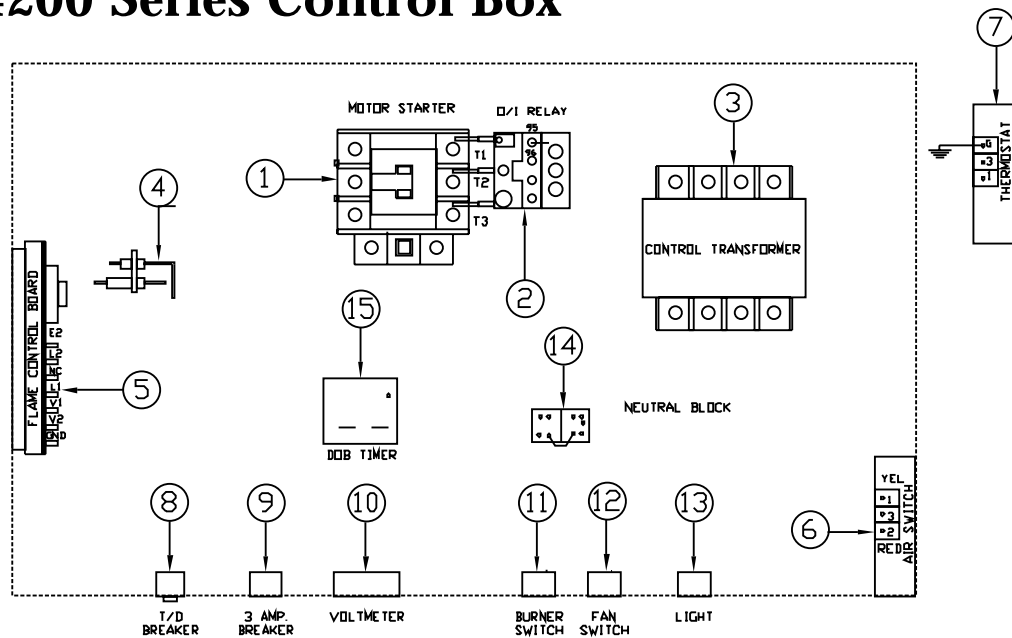
# Model 4200 Series

ITEM	PART#	DESCRIPTION
1	HWP HC1069B	LID FOR CONTROL BOX
2	HWP HC1069A	CONTROL BOX LID
3	N/S	COPPER TUB/AIR SWITCH
4	HWP HP1048	FAN BLADE (SPECIFY HP)
5	HWP HG1051	FAN GUARD
6	HWP HM1078	MOTOR 7.5 HP 1 PH
*	HWP HM1079	MOTOR 7.5 HP 3 PH
*	HWP HM1067	MOTOR 10 HP 1 PH
*	HWP HM1068	MOTOR 10 HP 3 PH
*	HWP HM1071	MOTOR 15 HP 3 PH
*	HWP HM1080	MOTOR 20 HP 3 PH
7	HWP HC1009	HI LIMIT SWITCH
8	HWP HB4200	BODY
9	HWP HB1070	BURNER
10	HWP TT-3	TRAILER
11	HWP HD1055B	DISCONNECT 60 AMP 1PH
*	HWP HD1057B	DISCONNECT 60 AMP 3PH
*	HWP HD1057	DISCONNECT 30 AMP 3PH
12	HWP HV1067	VAPORIZER RING

\* Items not shown on breakdown



# Model 4200 Series Control Box



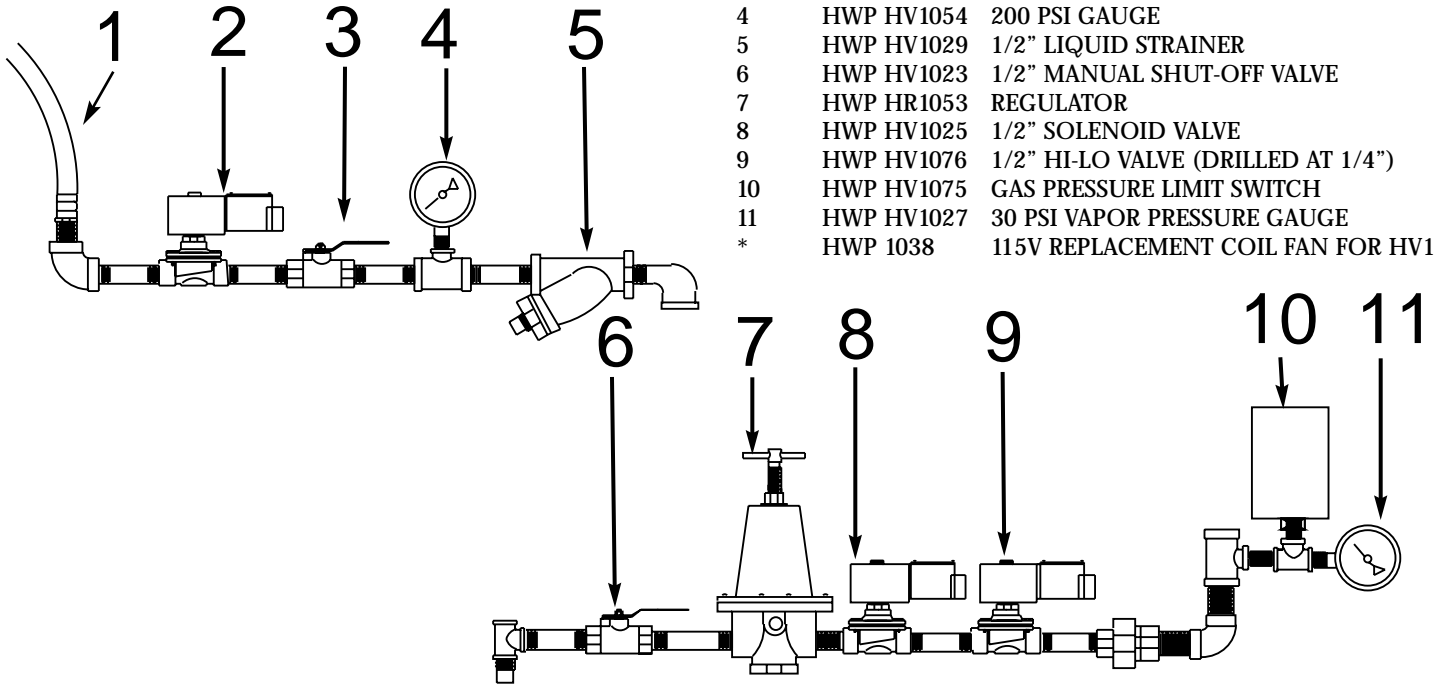
ITEM	PART#	DESCRIPTION
1	HWP HS1046	MOTOR RELAY (3PH)
*	HWP HS1045	MOTOR RELAY (1PH)
2	HWP HS1046B	OVERLOAD RELAY (3PH)
*	HWP HS1045B	OVERLOAD RELAY (1PH)
3	HWP HC1017	CONTROL TRANSFORMER
4	HWP HC1004B	IGNITER (FENWALL)
5	HWP HC1001C	D.S.I. CONTROL BOARD
6	HWP HC1010	AIR FLOW SWITCH
7	SFP 2453	HI-LO THERMOSTAT
8	HWP HC1072	TIME DELAY BREAKER
9	HWP HC1019B	3 AMP BREAKER
10	SFP 5989	VOLT METER (150 VOLT)

ITEM	PART#	DESCRIPTION
11	HWP HC1011	BURNER SWITCH
12	HWP HC1011	FAN SWITCH
13	SFP 2505	LIGHT
14	HWP 099125-03	NEUTRAL BLOCK
15	HWP HC1077	DELAY BREAK TIMER
*	HWP HS1046BM	BRACKET MOUNTING KIT
*	HWP HS1046C	OVERLOAD RELAY PRIOR TO 1991
*	HWP 2453A	THERMOSTAT SUB. ASSEMBLY W/15' 16/3 CORD

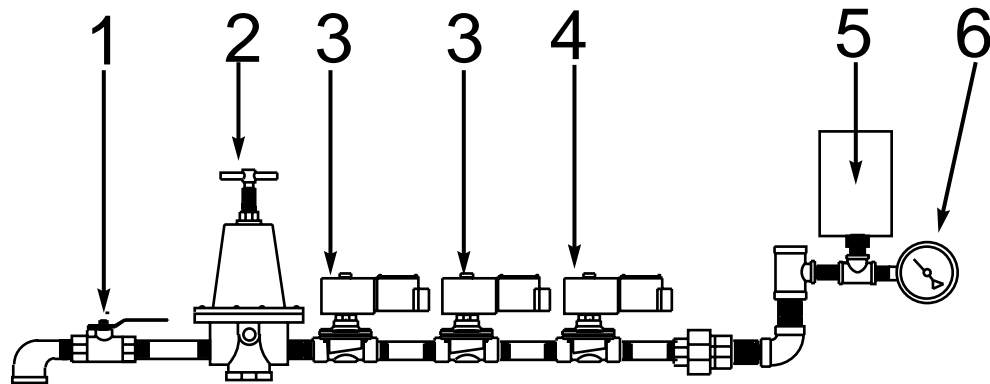
\* Items not shown on breakdown

# 4200 Series L.P. Pipe Train

ITEM	PART#	DESCRIPTION
1	HWP HV1042B	HOSE ASSEMBLY
2	HWP HV1037	1/2" LIQUID PROPANE SOLENOID VALVE
3	HWP HV1023	MANUAL SHUT-OFF VALVE
4	HWP HV1054	200 PSI GAUGE
5	HWP HV1029	1/2" LIQUID STRAINER
6	HWP HV1023	1/2" MANUAL SHUT-OFF VALVE
7	HWP HR1053	REGULATOR
8	HWP HV1025	1/2" SOLENOID VALVE
9	HWP HV1076	1/2" HI-LO VALVE (DRILLED AT 1/4")
10	HWP HV1075	GAS PRESSURE LIMIT SWITCH
11	HWP HV1027	30 PSI VAPOR PRESSURE GAUGE
*	HWP 1038	115V REPLACEMENT COIL FAN FOR HV1037



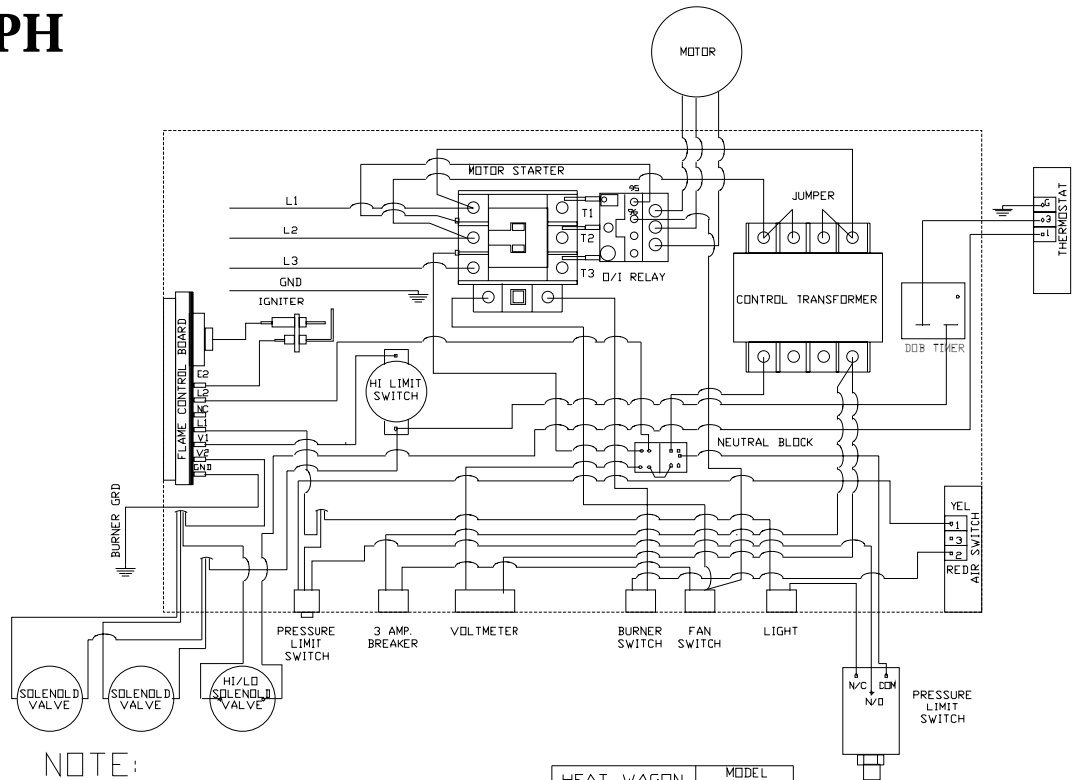
# 4200 Series Natural Gas Pipe Train



ITEM	PART#	DESCRIPTION
1	HWP HV1023	BALL VALVE
2	HWP HR1053	REGULATOR
3	HWP HV1025	1/2" SOLENOID VALVE
4	HWP HV1076	1/2" HI-LO VALVE (DRILLED AT 3/8")
5	HWP HV1075	GAS PRESSURE LIMIT SWITCH
6	HWP HV1027	30 PSI VAPOR PRESSURE GAUGE

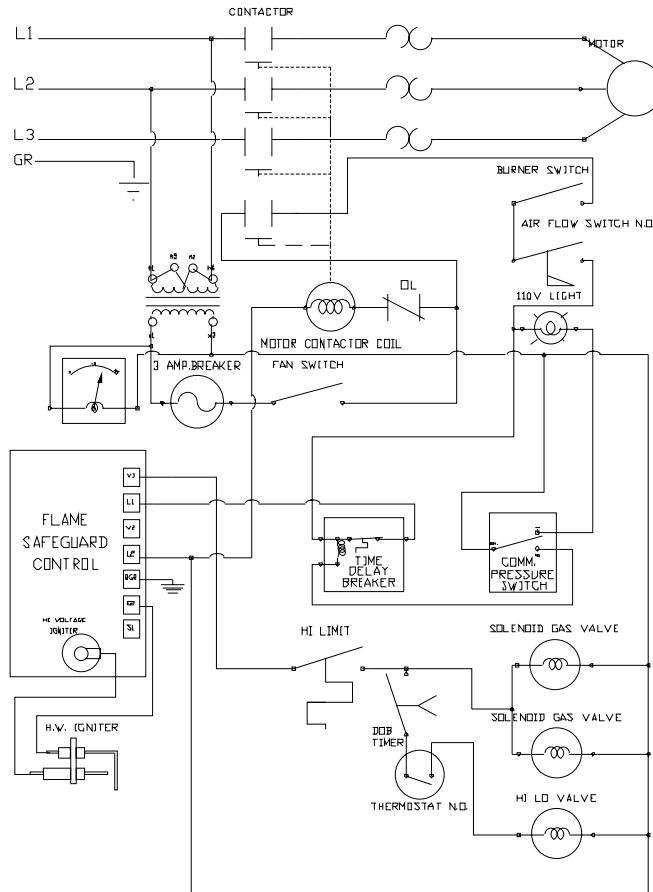


# 240 Volt 3 PH



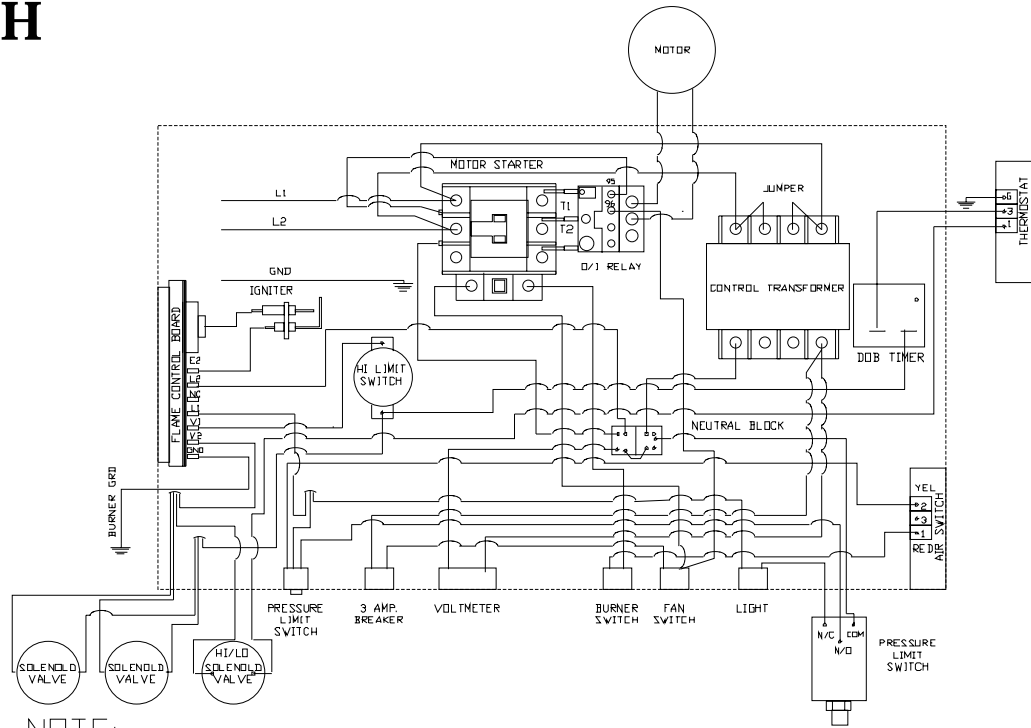
NOTE:  
ALL 16 GA. STR. IEW 600V,  
UNLESS OTHERWISE SPECIFIED

HEAT WAGON	MODEL 4200
DATE OF DRAWING 1998	FROM TO
4200CWD3	92 CURR.



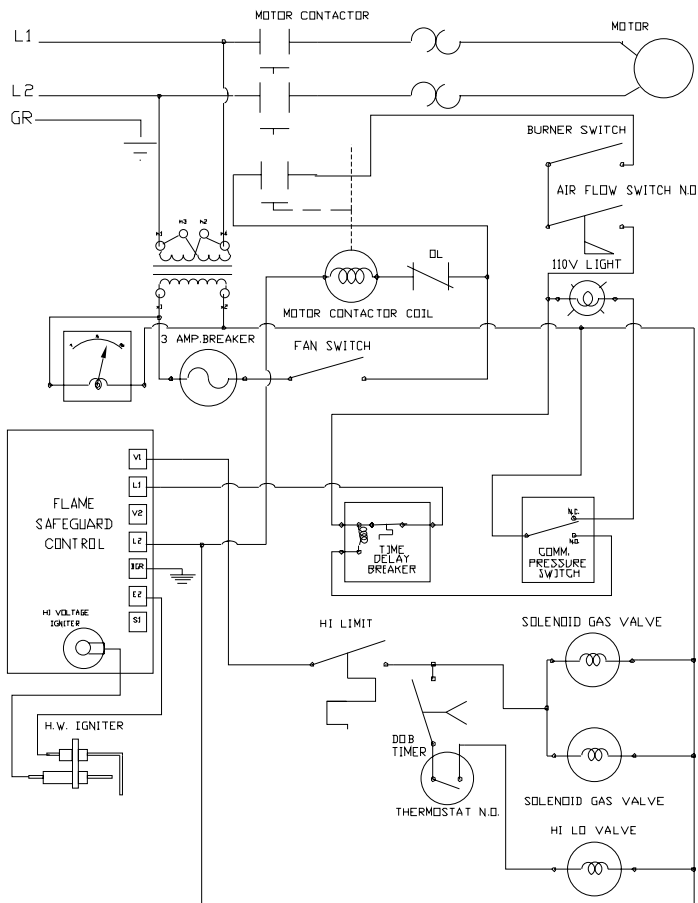
HEAT WAGON	MODEL 4200
DATE OF DRAWING 1998	FROM TO
42002403	1992-CURR.

# 240 Volt 1 PH



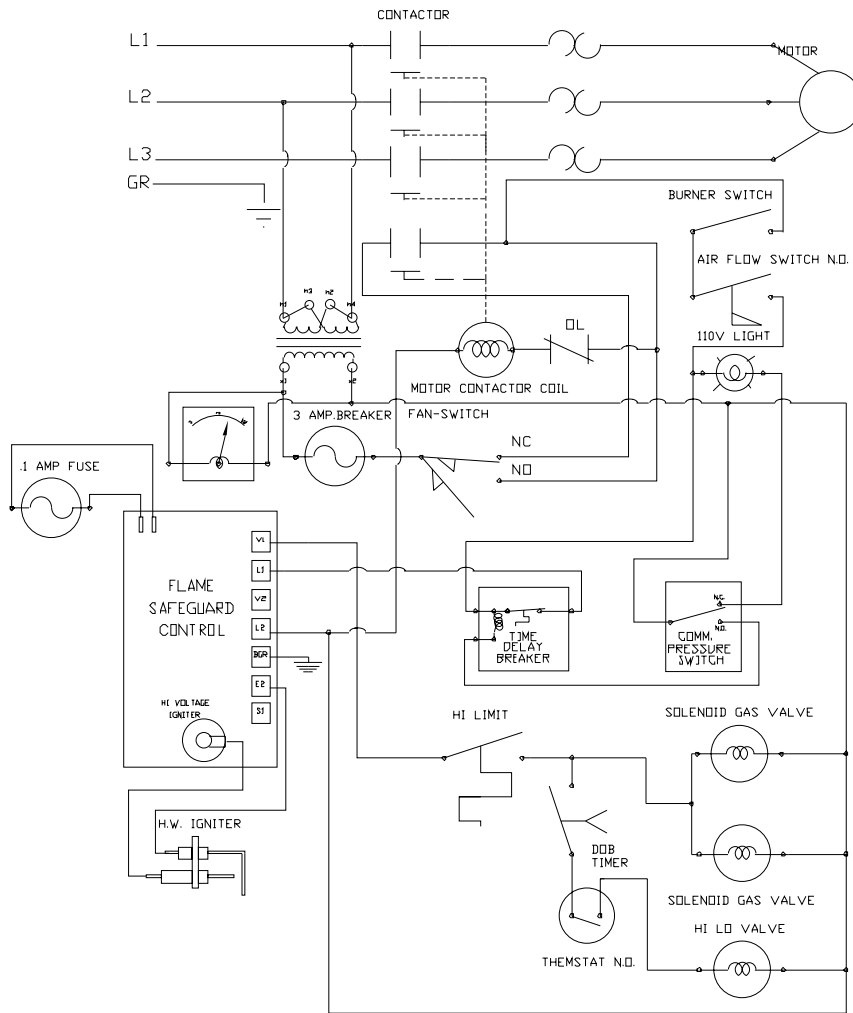
NOTE:  
ALL 16 GA. STR. IEW 600V,  
UNLESS OTHERWISE SPECIFIED

HEAT WAGON	MODEL
DATE OF DRAWING 1998	4200
4200CWD2	FROM TO 92 CURR.



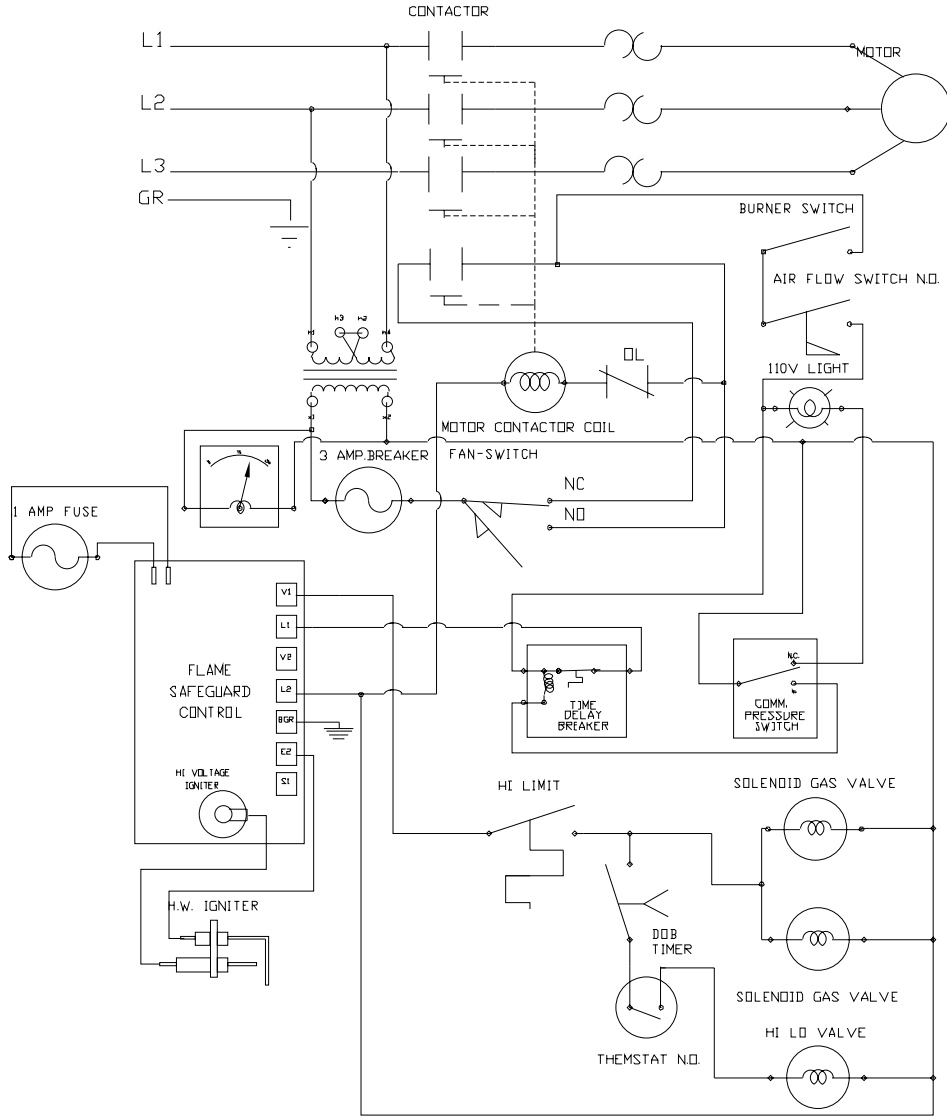
HEAT WAGON	MODEL
DATE OF DRAWING 1998	4200
4200WIR2	FROM TO 1992-CURR.

# 240 Volt 3 PH



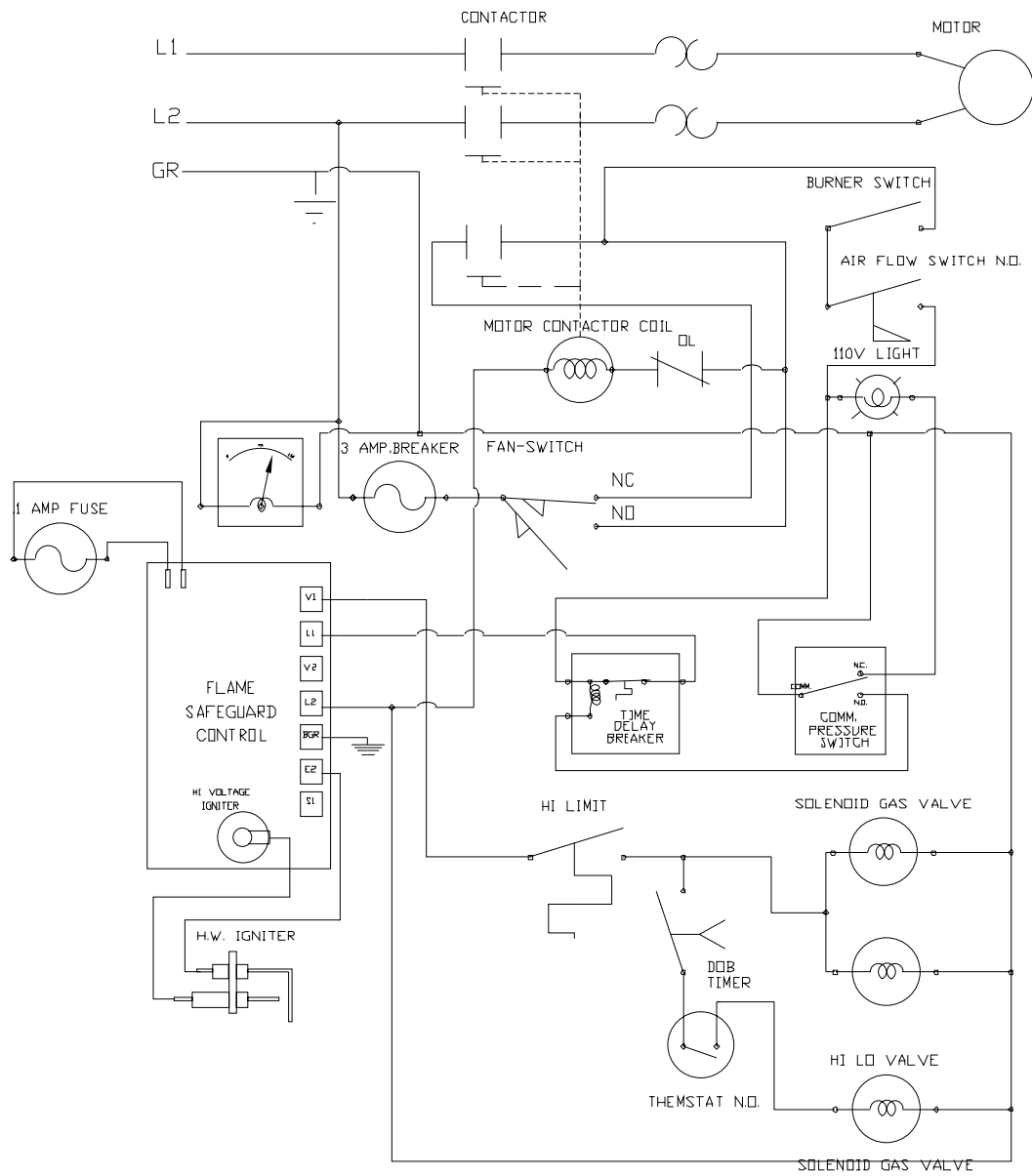
HEAT WAGON	MODEL
DATE OF DRAWING 1998	4200 SER.
4200SERA	FROM TO
	1982-1992

# 480 Volt 3 PH



HEAT WAGON	MODEL 4200 SER.
DATE OF DRAWING 1998	FROM TO
4200SERB	1982-1992

# 240 Volt 1 PH



HEAT WAGON		MODEL 4200 SER.	
DATE OF DRAWING	1998	FROM	TO
4200SERC		1982-1992	