



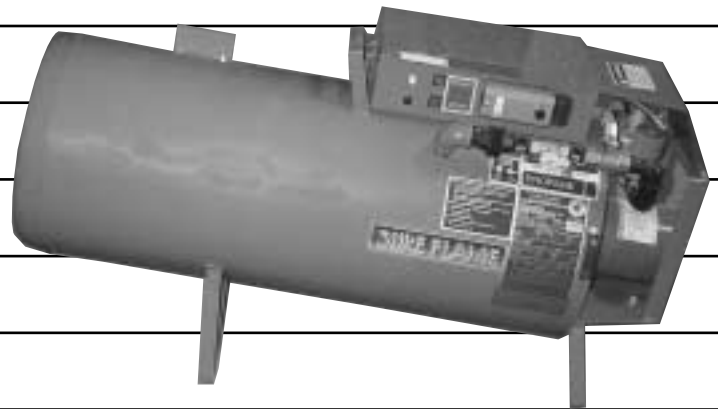
342 N. Co. Rd. 400 East  
Valparaiso, IN 46383  
219-464-8818 • Fax 219-462-7985  
[www.heatwagon.com](http://www.heatwagon.com)

## Installation and Maintenance Manual

Please retain this manual for future reference.

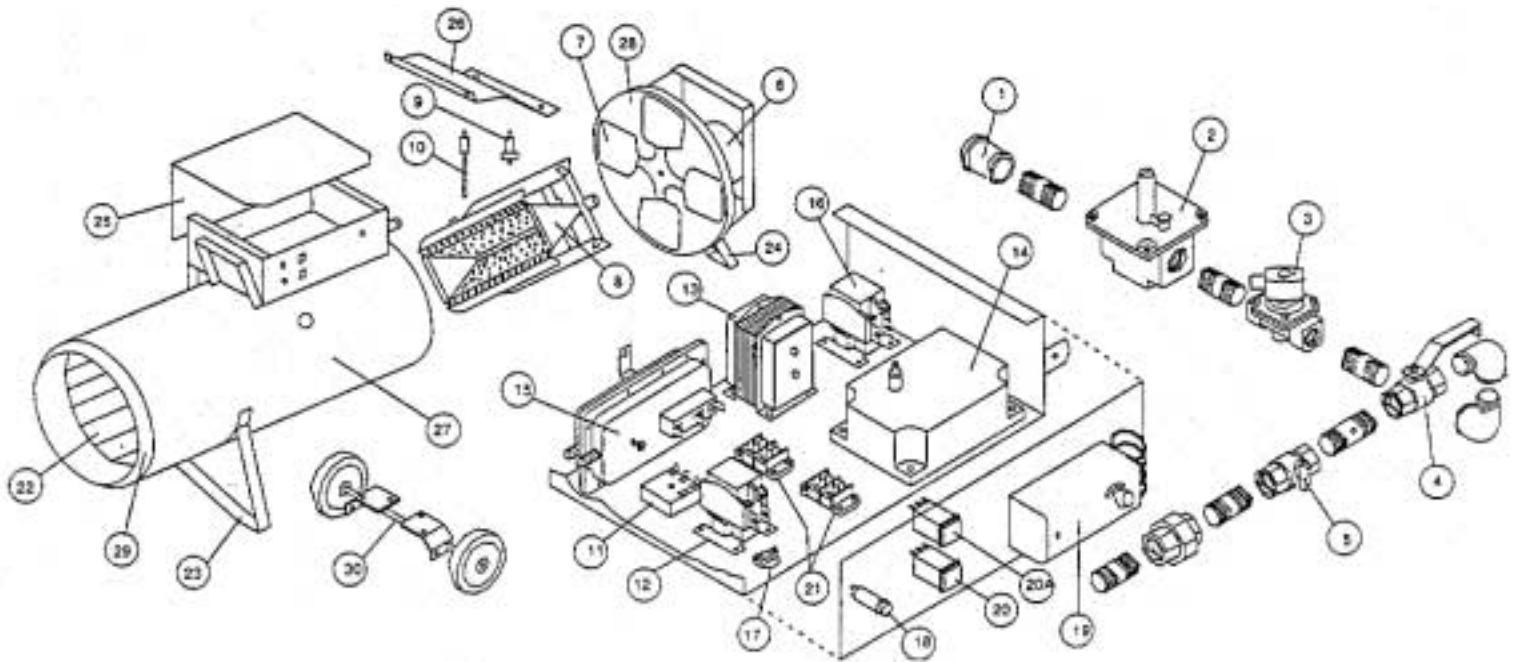
# S405

## *Construction Heater*



*For your safety: Do not use this heater in a space where gasoline or other liquids having flammable vapors are stored.*

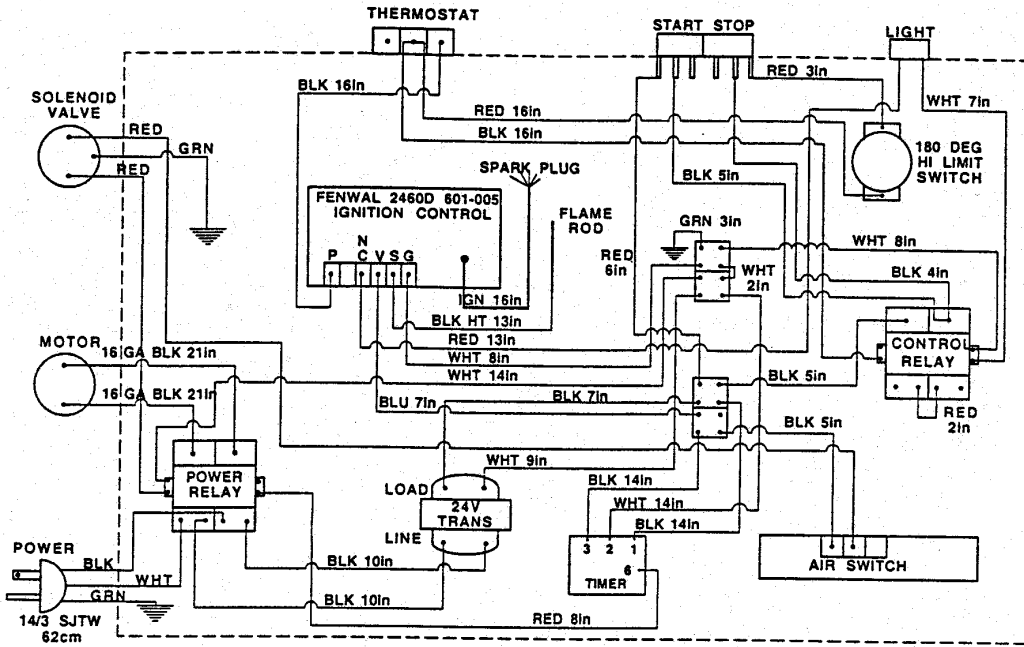
# S405 Heater Parts



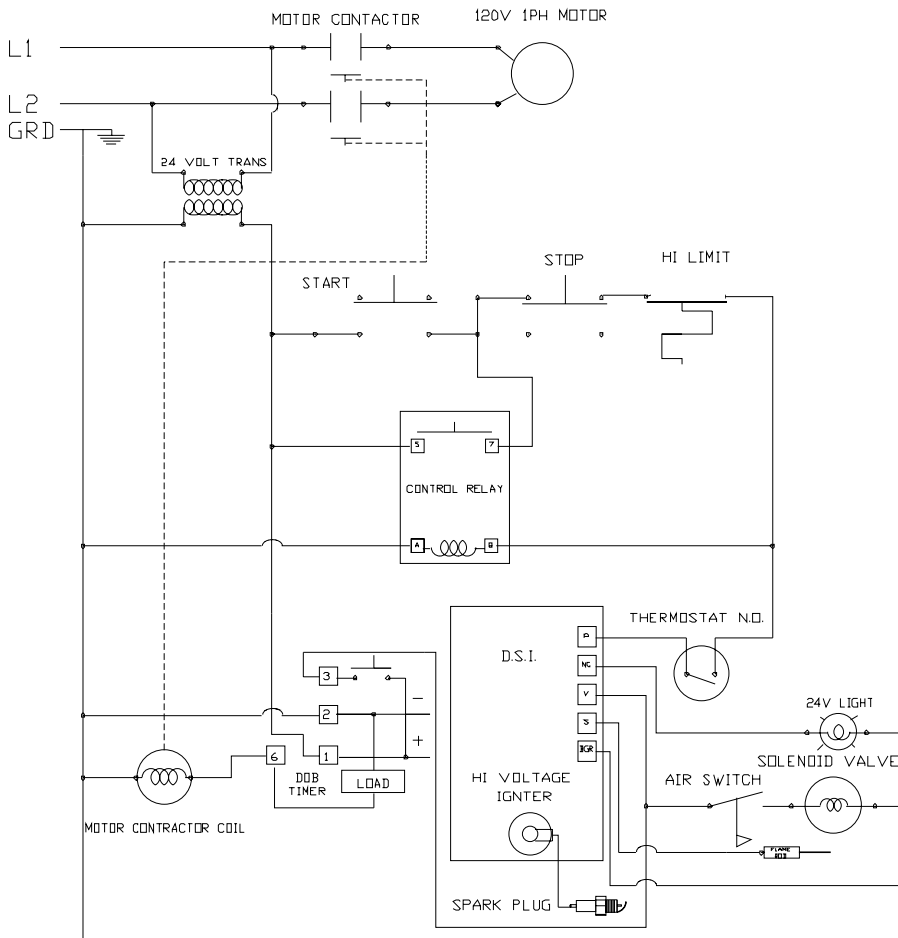
Ref.	Part No.	Description	Ref.	Part No.	Description
1	SFP 40SV01	Strainer (S400-80)	20A	SFP 3337G	On Switch (Green)
2	SFP 2524	Low Pressure Regulator	21	SFP 5768	Terminal Block
3	SFP 4514	Solenoid Shut Off Valve 24V	22	SFP S400-2	Heat Shield
4	SFP 40SV04	Gas Selector Valve (S400-73)	23	SFP S400-57	Front Leg Assembly
5	SFP 2538	Manual Shut Off Valve 3/4" valve	24	SFP S400-47	Rear Leg Assembly (less motor mount & screen)
6	SFP 2430	Motor 1/4 H.P.	25	SFP 4517	Control Box Lid
7	SFP 2420	Fan Blade	26	SFP SC400-38	Valve Train Cover
8	SFP 40SB26	Burner	27	SFP S400-53	Heater Body Includes 22, 23 & 29
9	SFP 2142	Spark Plug	28	SFP SFP3859	Motor Mount (with screen & rear legs)
10	40SB28	Flame Rod	29	SFP S400-3	Nose Cone
11	SFP 7465	24VAC 5-Second Delay-ON-Break Timer	30	ACC-SWK1	Wheel Kit (Optional)
12	SFP 4519	Control Relay 24V	31	ACC-40SV06	Regulator (Optional)
13	SFP 4510	Transformer 24V			
14	SFP 5943	Direct Spark Ignition Control			
15	SFP 5124	Air Switch			
16	SFP 4519	Motor Relay 24V			
17	SFP 2446	Hi Limit Thermoswitch			
18	SFP 4518	Indicator Light 24V			
19	SFP 2453	Thermostat			
20	SFP 3337R	OFF Switch (Red)			

# S405 CONSTRUCTION HEATER WIRING DIAGRAM

NOTE: This wiring diagram applies to heaters with serial #5437 and greater



NOTE: ALL WIRES 18 GA STR TEW 600V UNLESS OTHERWISE SPECIFIED



SURE FLAME	
DATE OF DRAWING 405BA97	FROM TO 1998 1996 CUR.

