



342 N. Co. Rd. 400 East  
Valparaiso, IN 46383  
219-464-8818 • Fax 219-462-7985  
[www.heatwagon.com](http://www.heatwagon.com)

## Installation and Maintenance Manual

Please retain this manual for future reference.

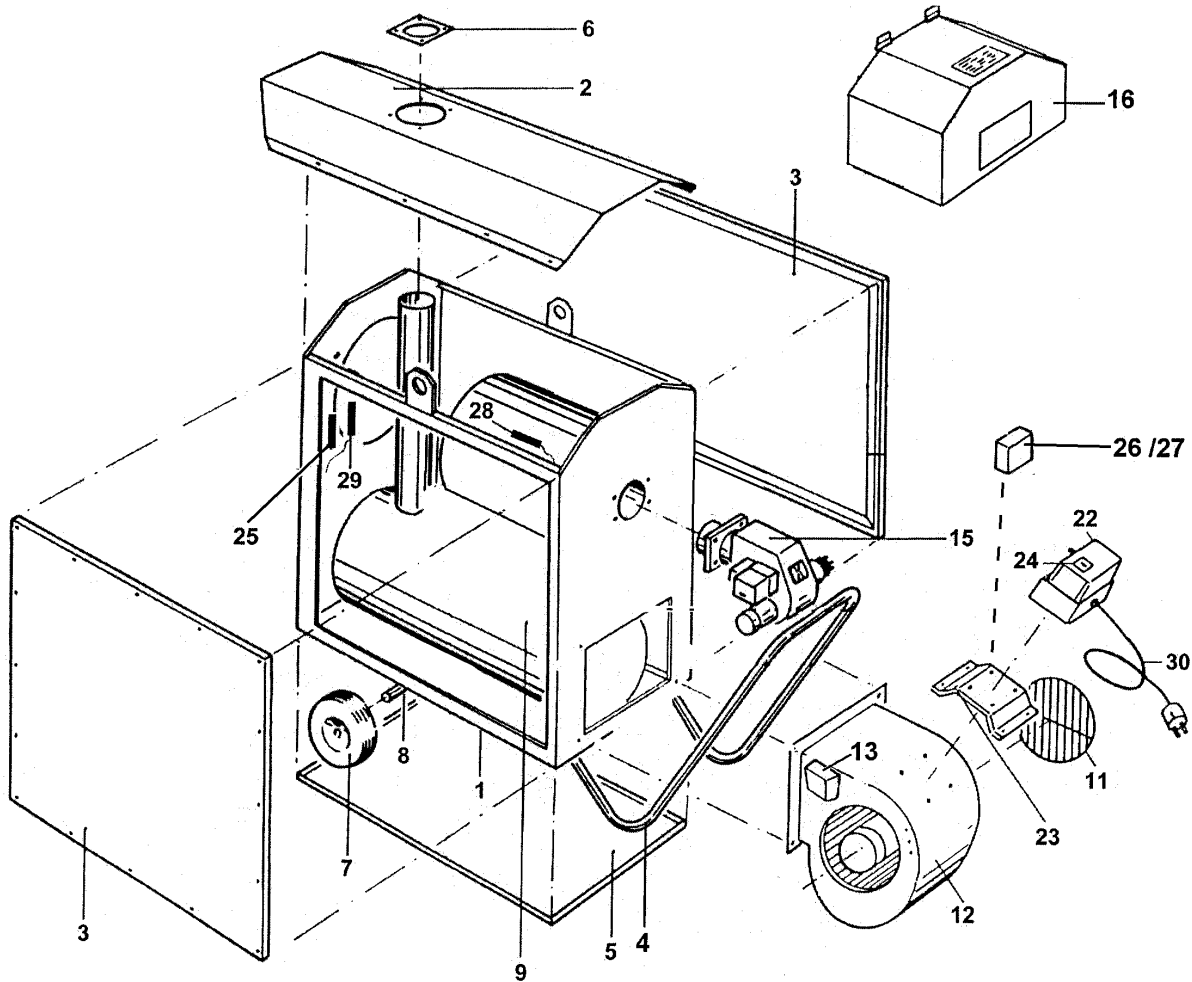
# VG175

*Construction  
Heater*



*For your safety: Do not use this heater in a space where gasoline or other liquids having flammable vapors are stored.*

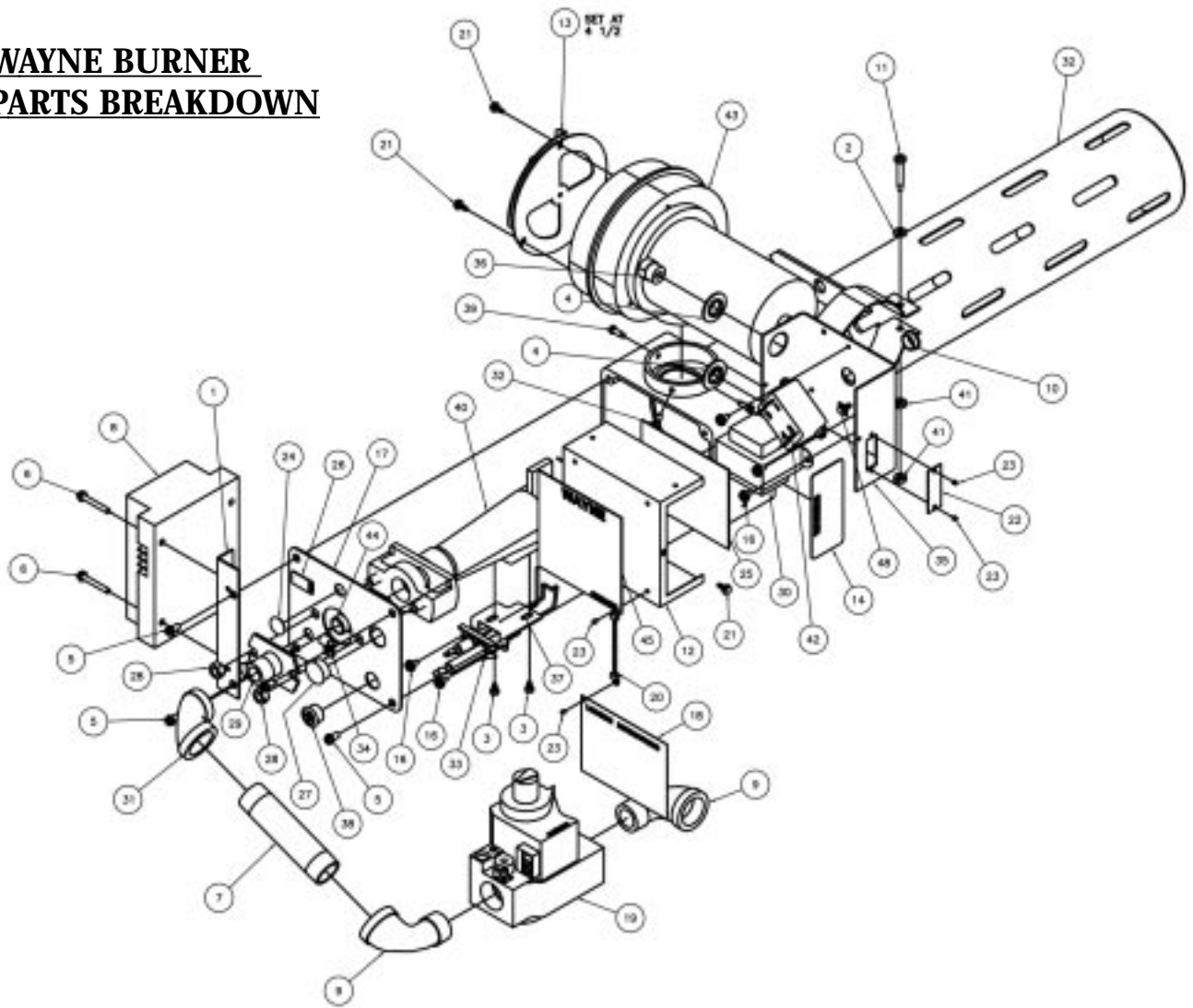
# Heat Wagon VG175 Parts List



ITEM	PART#	DESCRIPTION	ITEM	PART#	DESCRIPTION
1	HWP 2709001	HEATER FRAME	24	HWP 26400	MAIN SWITCH
2	HWP 2709002	COVER PLATE	25	HWP 21400	OVERHEAT LIMIT SWITCH (Capillary)
3	HWP 2709003	SIDE PANELS (2)	26	HWP 40850	THERMOSTAT BOX
4	HWP 2709004	REAR HANDLE	27	HWP 20579	HEATER CONTROL UNIT
5	HWP 2709005	BOTTOM PLATE	28	HWP 20581	FAN SENSOR (FOR POS. #27)
6	HWP 120001	FLUE COLLAR	29	HWP 20582	BURNER SENSOR (POS. #27)
7	HWP 2701065	WHEEL	30	HWP HC1020	POWER CORD & PLUG
8	HWP 2709008	WHEEL SHAFT	NOT SHOWN IN DIAGRAM		
9	HWP 2709009	BURNER CHAMBER ASSEMBLY	HWP 2709031	RADIATION SHIELD (UPPER)	
11	HWP 2709011	FAN GUARD, RIGHT	HWP 12000	SMOKE FLUE W/RAIN CAP	
12	HWP 2701244	FAN, COMPLETE	HWP 2453	REMOTE THERMOSTAT	
13	HWP 40900	FAN CONNECTION BOX	HWP 2700428	GASKET FOR BURNER MOUNT	
15	HWP 63956	BURNER VG175	HWP 2704085	SILICONE SEAL - 40850 THERM. BOX	
16	HWP 2709016	BURNER COVER	HWP 40SV06	OPTIONAL REGULATOR FOR MORE THAN 14" W.C.	
22	HWP 41000	MAIN CONTROL BOX	HWP 210047	RUBBER EDGE SEAL (SOLD PER FOOT) (30 FEET PER HEATER)	
23	HWP 1709023	BRACKET, MAIN CONTROL BOX			

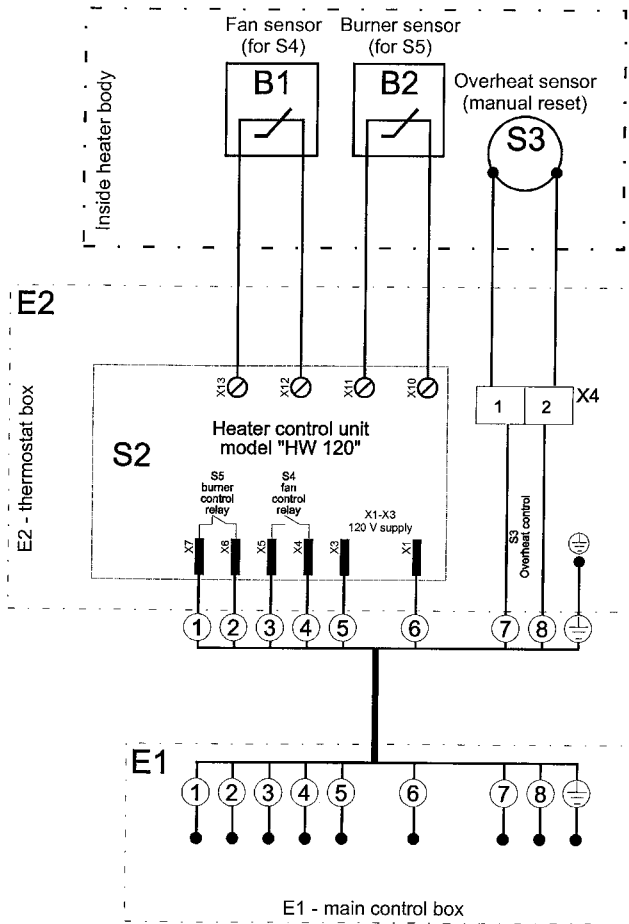
Also see Control Box Parts page 17.

# WAYNE BURNER PARTS BREAKDOWN

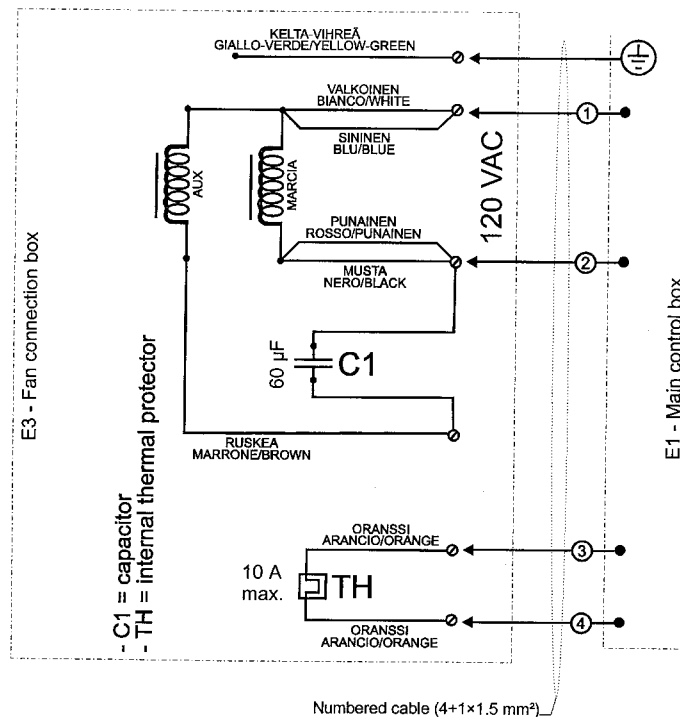


ITEM	PART#	DESCRIPTION	ITEM	PART#	DESCRIPTION
1	62700-002	Bracket, Control Mounting	25	62659-004	Decal, Wiring-Schem S87K
2	16635-002	Washer, Flat #8	26	16201	Decal, Date Code
3	63244-002	Screw, Fillester 10-24 x .250	27	63103-001	Plug, Window .84" OD
4	60226	Bushing, Metal	28	15872	Nut, 5/16 - 18 x .577
5	12697-002	Screw, HXSL 23 10-24 x .375	29	62898-001	Connector, Orifice Holder
6	100603-008	Screw, HXSL 8 18 x 1.25	30	60186-004	Transformer, 120V/24V 50/60 Hz
7	61624-002	Nipple - 3/4" x 4" TBE Blk	31	60016	Elbow, 1/2NPT x 3/4NPT-Reducing
8	101243-001	Control, Ignition	32	63957-001	Tube/Housing - (22035-001)
9	63674-001	Elbow, 3/4" NPT 90°	33	62261-002	Electrode ASM
10	60177	Bushing, Snap Insulating	34	62047	Clamp, Cable .44"ID
11	61755	Screw, RDPLMC 10-32 x 1.25"	35	62903-001	Control Box, w/strap
12	62899	Lid, Control Box	36	13026	Bushing Strain Relief .562 Hole
13	44	Shutter, Air-Pie	37	63402-001	Bracket, Electrode Mount
14	62960-001	Decal, Carbon Dioxide Warning	38	62048	Bushing, Universal
15	62360	Plug, Hole .39" Dia.	39	18007	Screw, HEXSLT #8 x 1/2" Self Drill
16	15731	Screw, 6-32 x .312 HEXSLT	40	61638-001	Venturi Asm.
17	63256-001	Plate, Back Housing	41	60054	Nut, Hex 10-32
18	61843	Plate, Instruction-Lighting	42	62406-002	Relay, 24V 50/60 Hz
19	62374-004	Valve, Gas VR8305M 4801 H-(HSG)	43	61651-004	Motor/Blower, 115V/60Hz 3200 RPM
20	61759	Chain, Bead-Type	44	62182	Orifice, #G(.261")/6.63MM (nat. gas)
21	100603-001	Screw, 6-20 x .375		62371-020	Orifice, #G(.201")/6.63MM (propane)
22	62658-001	Cover, Terminal Strip Hole	45	63959-001	Decal, Rating P265F DIN
23	61684	Pop Rivet .12 x .28	46	63375-001	Wire, Harness - 3 wire (not shown)
24	61830	Plug, Hole .453	47	62947-003	Wire, Ignitor Lead - 18" (not shown)

# 120 Volt 1 PH



ITEM	PART#	DESCRIPTION
E1	HWP 41000	MAIN CONTROL BOX (Fibox 175x125x100 MM)
E2	HWP 40850	THERMOSTAT BOX (Fibox 125x125x75 MM)
E3	HWP 40900	FAN CONNECTION BOX (Fibox 175x125x75 MM)
S1	HWP 120021	MAIN SWITCH
S2	HWP 20579	HEATER CONTROL UNIT,
B1	HWP 20581	FAN SENSOR (for S4)
B2	HWP 20582	BURNER SENSOR (for S5)
S3	HWP 21400	OVERHEAT LIMIT SWITCH
X1	HWP 36701	TERMINAL BLOCK (E1)
X2	HWP 36100	GROUNDING BLOCK (E1)
X3	HWP 30330	POWER CABLE & PLUG
X4	HWP 36701	TERMINAL BLOCK (E2)
X5	HWP 36701	TERMINAL BLOCK (E3)



# 120 Volt 1 PH

