



342 N. Co. Rd. 400 East
Valparaiso, IN 46383
219-464-8818 • Fax 219-462-7985
www.heatwagon.com

Installation and Maintenance Manual

Please retain this manual for future reference.

Fans & Torches



For your safety: Do not use this heater in a space where gasoline or other liquids having flammable vapors are stored.

WARRANTY

All new Heat Wagon and Sure Flame heaters and fans are guaranteed against defective materials and workmanship for one (1) year from invoice date.

Warranty repairs may be made only by an authorized, trained and certified Heat Wagon dealer. Warranty repairs by other entities will not be considered. Warranty claims must include model number and serial number.

LIMITATIONS

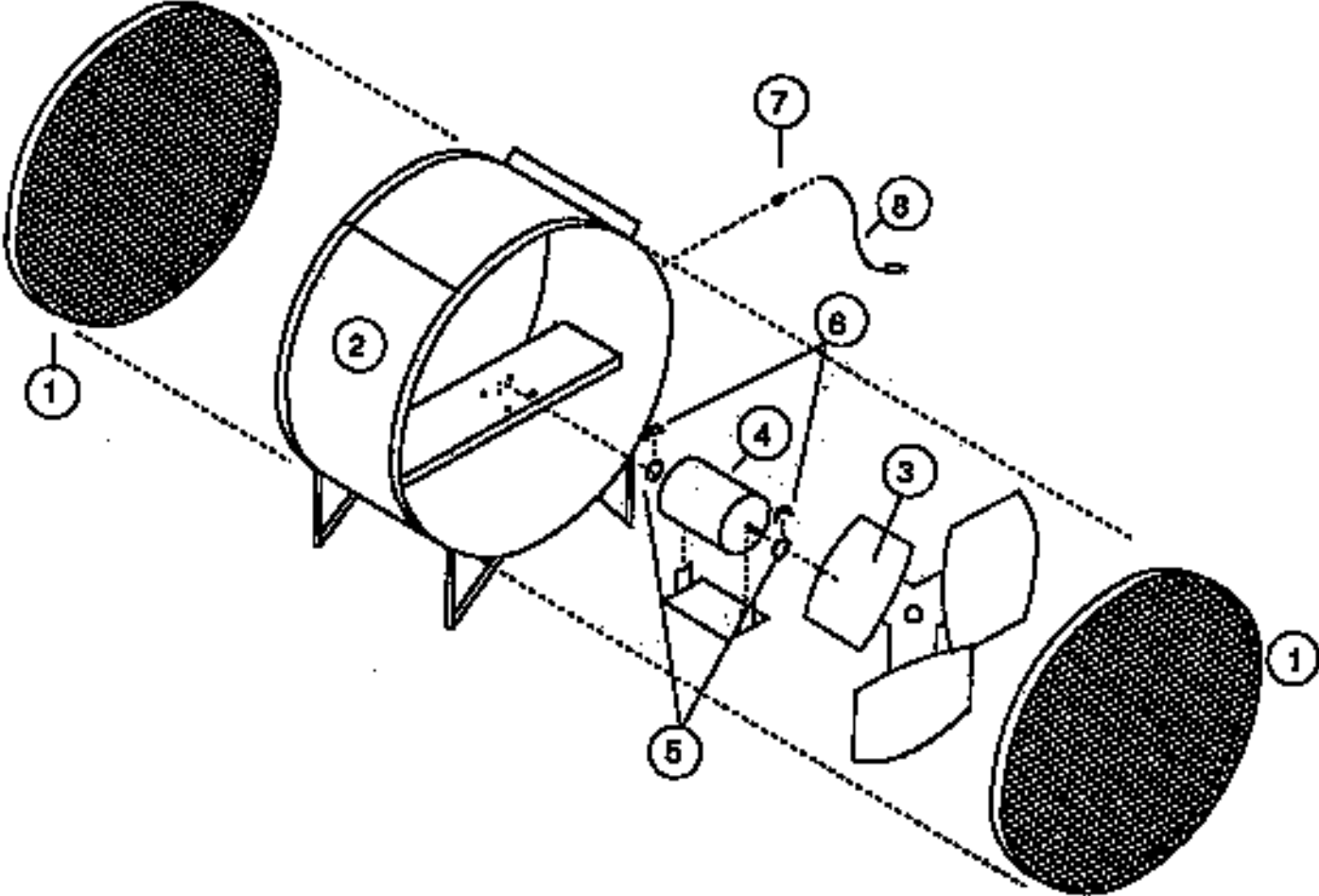
Warranty claims for service parts (wear parts) such as spark plugs, igniters, flame rods will not be allowed. Diagnostic parts such as voltage meters and pressure gauges are not warrantable.

Evidence of improper fuel usage, fuel pressures outside of manufacturer's specification, poor fuel quality, and improper electric power, misapplication or evidence of abuse may be cause for rejection of warranty claims.

Travel time, mileage and shipping charges will not be allowed. Minor adjustments of heaters are dealers' responsibility. Defective parts must be tagged and held for possible return to the factory for 60 days from date of repair. The factory will provide a return goods authorization, (RGA) for defective parts to be returned.

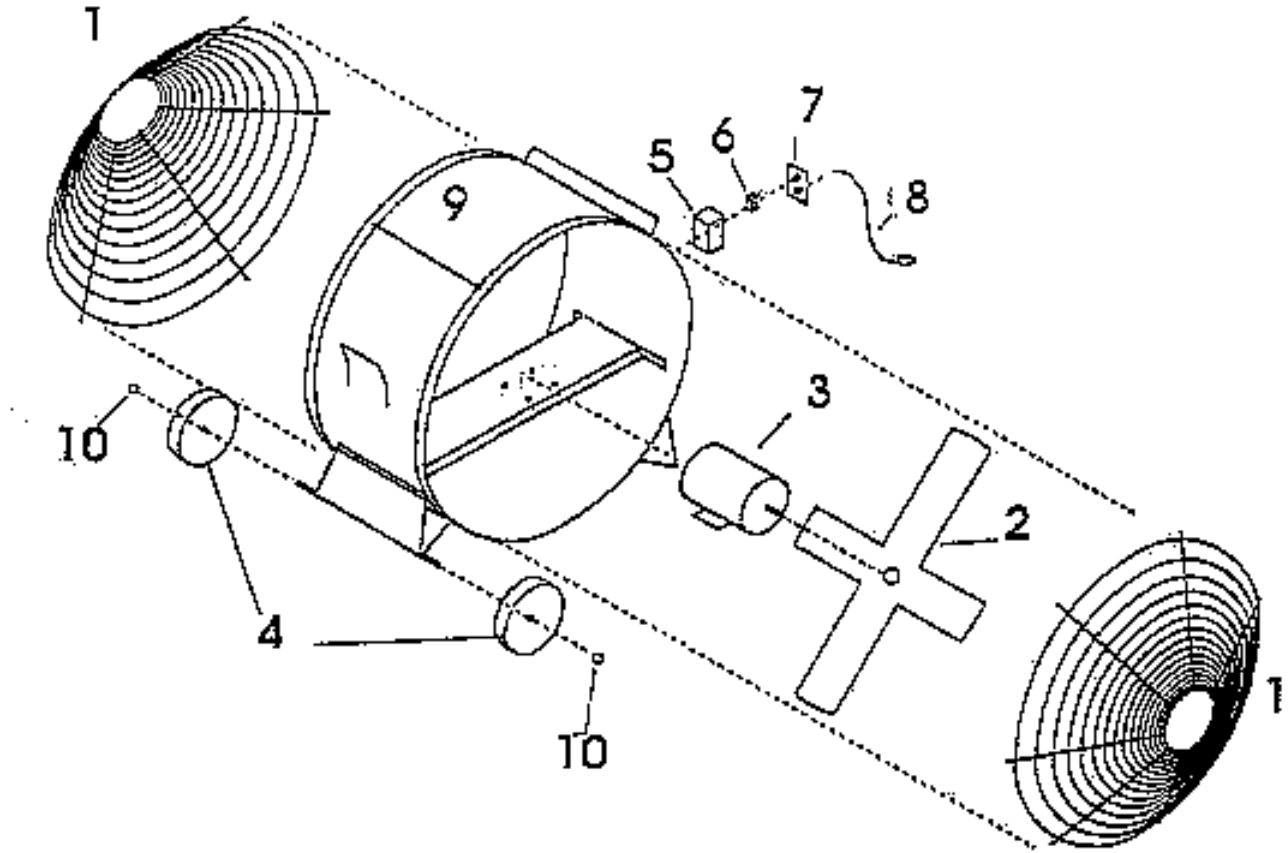
No warranty will be allowed for parts not purchased from Heat Wagon.

Model FN20 Air Mover



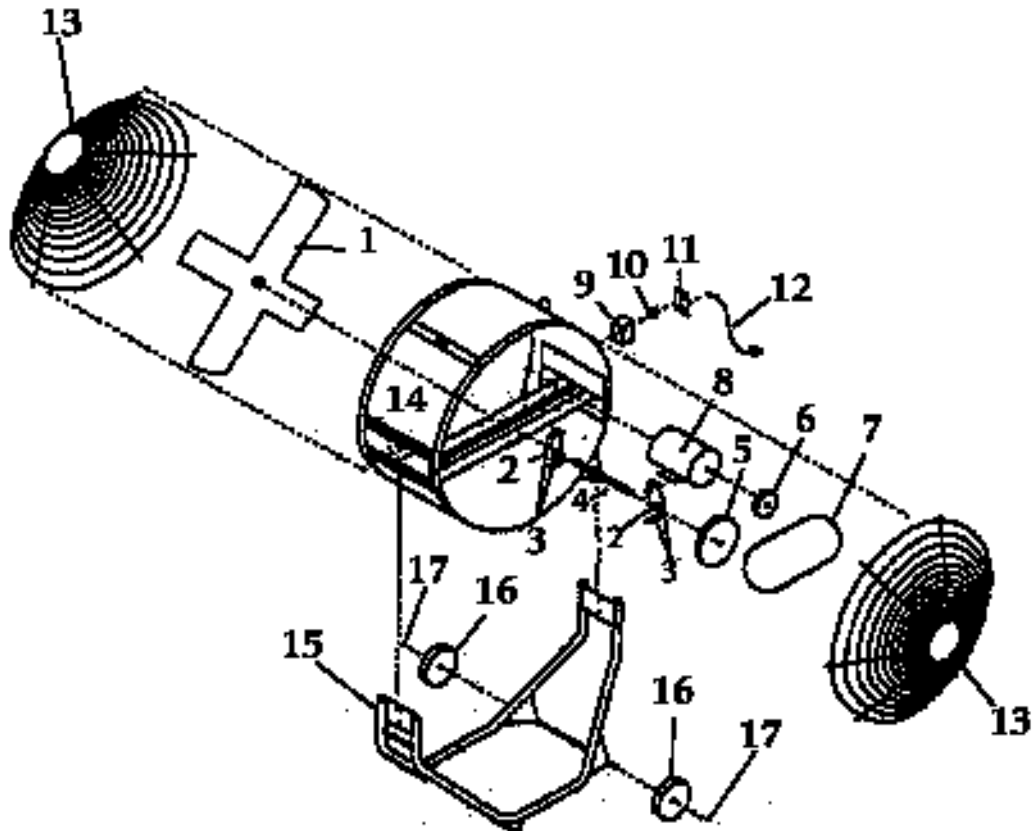
Item #	Part #	Description
1	SFP FN2051	Fan Guard
2	SFP FN2053	Fan Housing
3	SFP SFN2	20" Fan Blade
4	SFP FS2431	1/2 HP 115V 1725 RPM Electric Motor
5	SFP FS5665	Rubber Motor Mount
6	SFP FS5962	Motor Mount Base Clamp Kit
7	SFP FS5844	3/4 Strain Relief Connector
8	HWP HC1020	Power Cord 24 inch

Model FN30 Air Mover



Item #	Part #	Description
1	SFP FS6032	30" Fan Guard
2	SFP FS6031	30" Fan Blade
3	SFP FS6030	1 HP, 115V, 1140 RPM Electric Motor
4	HWP HW1164	8" Semi Pneumatic Wheel
5	SFP FS5957	Switch Box
6	HWP HC1011	20 Amp Toggle Switch
7	SFP FN42125	Switch Cover
8	HWP HC1020	Power Cord
9	HWP FN30701	Fan Housing
10	SFP FS6330	1/2" Push Nut

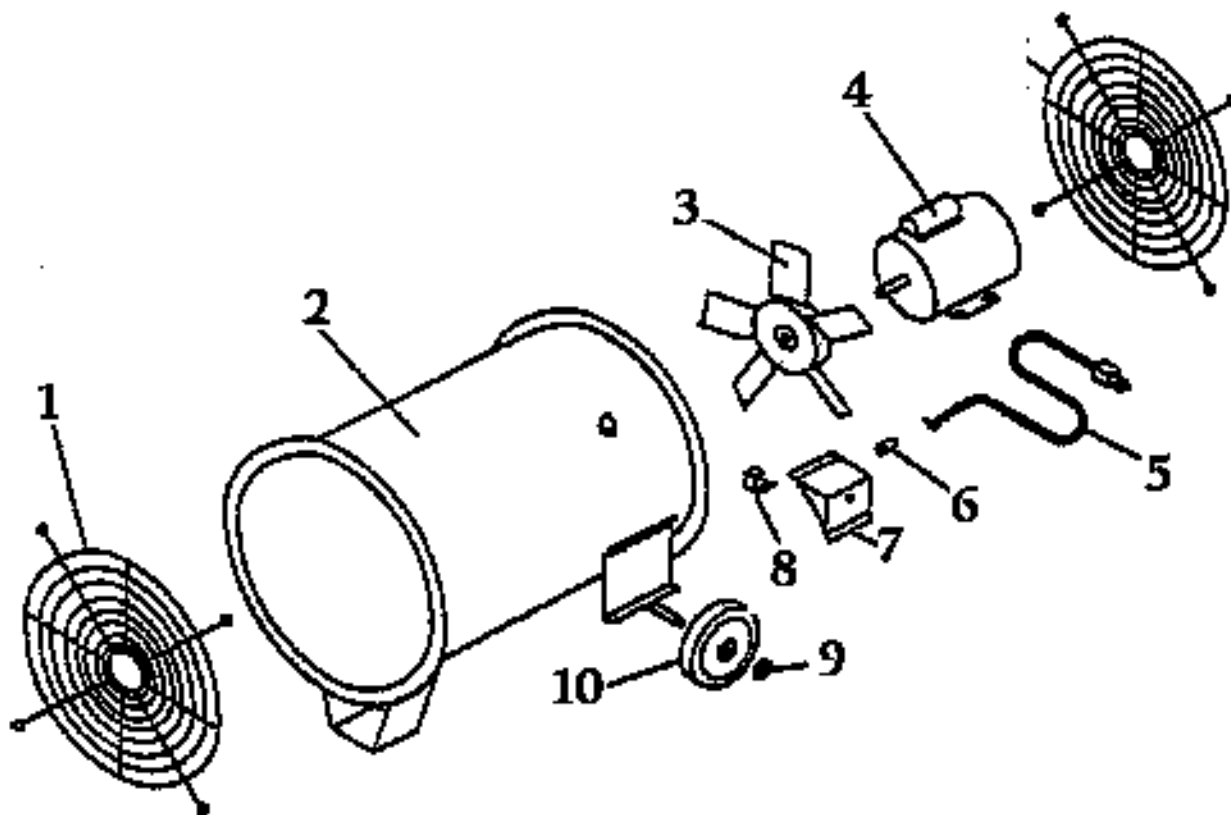
Model FN42 Air Mover



Item #	Part #	Description
1	SFP FS5932	42" Fan Blade
2	SFP FS5607	1" Bearing Insert
3	SFP FS5961	1" Pillow Block
4	SFP FN42116	1" Shaft
5	SFP FS5958	10" Sheave
6	SFP FS5960	3.0" Sheave
7	SFP FS5983	46" V-Belt
8	HWP HC1166	1HP, 115V, 1725 RPM Motor
9	SFP FS5957	Switch Box
10	HWP HC1011	20 Amp Toggle Switch
11	SFP FN42125	Switch Cover
12	HWP HC1020	Power Cord
13	SFP FS5990	42" Fan Guard
14	SFP FN42702	Fan Housing
15	SFP FN42511	Tubular Frame
16	HWP HW1164	Semi Pneumatic Wheel 8"
17	SFP FS6330	Push Nut 1/2"
*	SFP FN42512	Latch Handle w/Pin

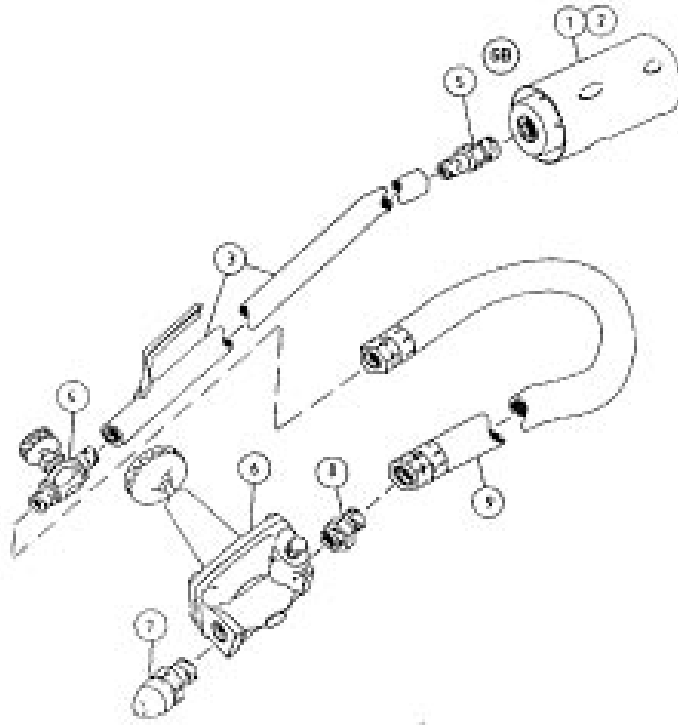
*Item not shown

Model UB18-1 Utility Blower



Ref	Part No.	Description
1	SFP FS6611	Fan Guard
2	UB-1705	Housing Assembly w/o Wheels
3	SFP FS6609	Fan Blade
4	HWP HM1166	1HP, 115V, 1725 RPM Motor
5	HWP HC1020	Power Cord
6	SFP FS5844	7/8" Strain Relief Bushing
7	SFP UB1503	Switch Box
8	HWP HC1011	20 Amp Toggle Switch
9	SFP FS6330	1/2" Push Nut
10	HWP HW1164	8" Semi Pneumatic Wheel
NOT SHOWN	ACC-DFA18	UB18 18" Duct Transition

Model ST2 & ST3 Torch Parts



SURE FLAME ST2 & ST3 TORCH PARTS LIST

Ref.	Part No.	Description
1	SFP 30BV1	ST2 Sure Flame Burner
2	SFP BV3-51	ST3 Sure Flame Burner
3	SFP 12SO1	Torch Handle
4	SFP 12SO2	Gas Valve
5	SFP 12S03	Burner Orifice (ST-2)
5B	SFP 12S04	Burner Orifice (ST-3)
6	SFP 567FB	Regulator
7	SFP 30SO7	POL Fitting
8	SFP 30SO8	Hose Coupling
9	HWP 2510LH	1/4" x 10' Hose